

STAMPS AND COINS

By RUSS MACKENDRICK



In view of the current barrage of "commemorative" silver, it may come as a surprise to hear that the United States has coined only one commemorative silver dollar. This is it — the Lafayette. It dates from 1900. Besides the marquis it also shows G. Washington — the first president's portrait appeared on an authorized silver coin.

The design on the back is a copy of a monument erected in Paris as a gift from the American people — including some thousands of school kids who contributed pennies. The artist was the same Charles E. Barber who executed the well-known dime, quarters, and halves that ran from 1862 into the teens of this century.

The other U.S. commemorative silver pieces are the Isabella quarter of 1893 and a total of 48 fifty-cent coins. The Tercentenary of 1933 and the Bridgeport Centennial of 1938. The mintage of each was about 25,000. The design of the Tercentenary shows the Charter Oak and a minuteman bound eagle. The Bridgeport has a shot of P.T. Barnum and a

glider with a bird's head. This is the Marc Chagall Memorial Window at the U.N. Headquarters. The silver commemoratives are rendered in the Hawaiian Sesqui seal as some thousands of school kids who contributed pennies. The artist was the same Charles E. Barber who executed the well-known dime, quarters, and halves that ran from 1862 into the teens of this century.

The other U.S. commemorative silver pieces are the Isabella quarter of 1893 and a total of 48 fifty-cent coins. The Tercentenary of 1933 and the Bridgeport Centennial of 1938. The mintage of each was about 25,000. The design of the Tercentenary shows the Charter Oak and a minuteman bound eagle. The Bridgeport has a shot of P.T. Barnum and a

There is a big advertisement in Linn's entitled "Se-tenant Headquarters." (Se-tenant is French for "joined together.") Actually there are enough joined-together stamps currently among U.S. issues to make it a collector's specialty.

The earliest example offered in the ad is the Christmas set of 1964. This is the group of the holly, mistletoe, poinsettia, and "Joyland."

The most recent shown is the four different minerals. There are the ten Colonial Flags, and then some pairs — the Space Twins and the Moon Rover. The last two each have different designs joined together to make up one picture.

Also, the ad shows single pictures made up of four stamps in a set: the 2 cents Hatteras and the Boston Tea Party.

But for serenity with a vengeance, take a look at the

MANCHESTER HOSPITAL NOTES

Discharged Monday: Albin Pietrowski, 10 Ansaldi Rd.; Marie Blanchard, East Hartford; Paul Tongren, Belcher-town, Mass.; Gary Stanley, 59 Cooper St.; Marylee Kanehl, 47 E. Center St.; Elizabeth Evans, 191 Oak St.; Alice Hookins, 154 Main St.; South Windsor; Carol Zapada, 40 South Rd.; Bolton; William Phillips, Minnechaug Dr., Glastonbury.

Also, Peggy Gardner, 99 Oak St.; Anna Torstenson, 128 Green Manor Rd.; Elizabeth Gerseole, 869 Main St.; Robert Russell, 81 Walnut St.; Sharon

Hayes, 438 W. Middle Tpke.; Sherry Wojcik, Williamstic; Karen Spicer, 49 Barry Rd.; Patricia Damato, 566 Taylor St.; Laila Macchie, 460 N. Main St.

Also, Constantine Elstratum, 205 Terrace Dr., Rockville; Roseann Menzel, Dunn Rd., Coventry; Frank Hippo, East Hartford; Keith Burnham, 647 Ellington Rd., South Windsor; Joseph Muszynski, East Hartford.

Whoops! First steps are wobbly! So Jumping-Jacks made me. I have a ribbed plug in my sole to make each step a little steadier... Jumping-Jacks knows those first steps need a little extra help!



Jumping-Jacks.
Most feet are born perfect. They should stay that way.

Distinctively

MANCHESTER
Manchester Parkade
WEST HARTFORD
Corbins Corner
Use Your Master Charge

Illing Band, Choruses To Offer Yule Program

The Illing Junior High School unified arts will present a Christmas program Monday at 7:30 p.m. in the school auditorium.

Appearing on the program will be the Illing Band, the Girls' Chorus, piano music arranged for four hands, inter-pretive dance with narration, various instrumental ensembles, and the newly formed Boys' Glee Club. The band, directed by Robert Johns, will open the program playing "Christmas Tiding," "Christmas in Many Lands," and "Joyland."

Ralph MacCarone will direct the Girls' Chorus in "Christ Child," two songs for Hamakak, a choral rendition of "Pablo The Reindeer," and a calypso arrangement of "Sleep Little Tiny King" and "The Angels' Song" using flutists, guitars and piano accompaniment.

There have been only three up to this point in time: The Rome, starting in 1906; the London in 1930; and this Vienna type, current since 1965. It will cost 26 cents, marked up from 22 cents by an overprint.

An IRC is used to get an answer back from another country in case you don't have one of your stamps around to make up a SASE. I tried it last summer in a request to a New Zealand book dealer and it worked.

You will get a piece of paper telling you how to say in six languages: "This coupon is exchangeable in any country of the Universal Postal Union for one or more postage stamps representing the postage for an ordinary letter of the first weight sent by surface to a foreign country." Lots of luck pronouncing the Arabic and Chinese and Russian.

The Dec. 7 stamps may have a story about Charles Get-Rich-Quick Pont and his scheme that was based on buying IRC's in Spain that could be redeemed at a profit of 400 per cent in USA. This was in 1918. Ah, for the gimmicks of yesteryear!

DRESS SHIRTS FAMOUS BRANDS
One Group, (Not All Sizes)
Reg. to \$12.00 NOW \$4.39

GLENNEY'S Men's Shop
788 Main St. OPEN 'TIL 9 TONITE!

for the holidays!

the big ten is back!

10%

Off everything at Your Gift Gallery

Remember our free gift wrapping, and the Noel Shoppe complete with gifts & christmas decorations.

Main Floor of Watkins Bros. 965 Main Street Manchester

Last Call for the exclusive limited edition of our CONNECTICUT CHAIR

Here is your chance to give someone special an heirloom for Christmas. The limited edition Connecticut Chair by Watkins. Finished in black and gold and contrasting cherry seat and back pillow, you have a choice of six different Conn. historical scenes by Ken Hogle painted on the back slat.

Don't wait! This commemorative chair will not be sold after Dec. 31, 1974.

IT'S THE PERFECT GIFT FOR CHRISTMAS

Here is your chance to give someone special an heirloom for Christmas. The limited edition Connecticut Chair by Watkins. Finished in black and gold and contrasting cherry seat and back pillow, you have a choice of six different Conn. historical scenes by Ken Hogle painted on the back slat.

Don't wait! This commemorative chair will not be sold after Dec. 31, 1974.

IT'S THE PERFECT GIFT FOR CHRISTMAS

THE CHRISTMAS STORE **Watkins** THE CHRISTMAS STORE
OF MANCHESTER

GIFTS FOR EVERYONE • CHAIRS • DESKS • LAMPS
TABLES • ROCKERS • CABINETS • RECLINERS •
BOOKCASES • GRAND PIANO • CLOCKS

Charge It with MASTER CHARGE / BANK AMERICARD / CONVENIENT REVOLVING CHARGE

935 MAIN ST., MANCHESTER / 643-5171

CHRISTMAS HOURS OPEN MON. THROUGH FRI. TILL 9 - SAT. TILL 5:30

Manchester Evening Herald

MANCHESTER, CONN., THURSDAY, DECEMBER 12, 1974 — VOL. XXIV, No. 62
Manchester—A City of Village Charm THIRTY-SIX PAGES - TWO SECTIONS PRICE: FIFTEEN CENTS

Agostinelli Favored To Head Town GOP

By SOL R. COHEN
State Comptroller Nathan G. Agostinelli is the unanimous pick of Manchester's top Republicans to be GOP town chairman. He is expected to be named to the post Jan. 15, when the Republican Town Committee meets.

Agostinelli, who ran for lieutenant governor Nov. 5 and lost, will leave his state comptroller job Jan. 8. As GOP town chairman, he would succeed A. Paul Berte, who has been named First District workmen's compensation commissioner by Gov. Thomas Meskill and will be sworn in to that post Friday.

Berte's resignation as town chairman and committee member is effective today. He submitted it Thursday night to the town committee's executive board. The board, in a simultaneous action, voted to offer the chairmanship to Agostinelli. He accepted.



Nathan Agostinelli

Israelis Bomb Refugee Camp

BEIRUT (UPI) — Witnesses said Israeli fighter-bombers today bombed a Palestinian refugee camp in the heart of Beirut and air raid sirens wailed throughout the Lebanese capital.

Witnesses said they saw the Israeli jets attack the Sabra camp around 4 p.m. (19 a.m. EST).

Telephone lines in some sections of Beirut went dead, making it difficult to determine exactly what had happened.

The noise of jets roaring over the city was clearly audible in several parts of Beirut.

Witnesses said two Israeli jet fighters first opened fire with machine guns at "Sport City" stadium near Beirut International Airport.

The planes then swept in over the capital and fired rockets at the Sabra refugee camp, damaging several buildings in the area, the witnesses said.

Other reports said another refugee camp, Tel El-Zaatar, on Beirut's outskirts, also was attacked.

The air raids came shortly after the Israeli government threatened to strike Palestinian guerrilla bases and other targets in Lebanon in retaliation for terrorist attacks such as the grenade explosions in a Tel Aviv theater Wednesday.

In the see-saw guerrilla battle, the Palestine Liberation Organization claimed responsibility for the theater bombing following rocket attacks on three PLO installations in Beirut Tuesday.

Those attacks were in turn in response for the wounding of two Israelis by three guerrillas Dec. 6 in the frontier town of Rosh Hanikra. One of the guerrillas was killed and the others escaped.

As the jets screamed away from Beirut, clouds of smoke were seen by witnesses billowing from a four-story building in Sabra.

There was no word on casualties.

The Israeli military command in Tel Aviv confirmed the attack.

"We must hit them (Arab guerrillas) in their own places and positions to prevent them from operating on a regular basis," Information Minister Aharon Yariv said in a national radio interview.

Yariv said "We have a long war with our neighbors and the Palestinians."

Town Democrats Count Blessings But Mayor Sounds Sour Fiscal Note

By SOL R. COHEN
In a way, it was like the start of a new election campaign.

Still "walking on air" from its landslide sweep of all available offices a little over five weeks ago, Manchester's Democratic Town Committee met Wednesday night to count its blessings.

It found the blessings plentiful for the present and encouraging for the future.

The Democrats learned from their treasurer, Paul Phillips, they are \$3,300 in the black — even after spending an estimated \$6,800 for the last campaign.

As Democratic chairman Ted Cummings noted, "A good start toward our 1975 election campaign."

Democratic Registrar Herbert Stevenson told them they held a 2,227 lead over the Republicans in registrations. He said Manchester has 27,211 voters, with 10,426 of them Democrats, 8,598 Republicans, and 7,789 unaffiliated.

This time Cummings noted, "Our emphasis in 1975 will be on registering party members — as opposed to unaffiliated."

The one sour note Wednesday night (and it was only temporary) was the bleak picture painted by Mayor John Thompson — when he told of the fiscal problems the Town of Manchester may face in 1975.

"The expense for operating the town

10 SHOPPING DAYS TO CHRISTMAS

SNETCO Asking \$74 Million Hike

HARTFORD (UPI) — Southern New England Telephone Co. today asked for a \$74 million rate hike that would boost revenues 17 per cent and increase the home phone bill as much as \$5 a month.

Company President Alfred W. Van Sinderen, who held a news conference through a closed circuit television hookup in six Connecticut cities, said the company must increase pay phone charges from a dime to 20 cents.

However, he said, public cooperation and increased productivity made it unnecessary to ask for a charge for directory assistance.

Van Sinderen, who said company stock has declined steadily in value over the past decade, said he expects employment to decline through attrition and will cut back as much as possible on the company's construction program.

The phone company rate hike, the first in three years, was filed with the state Public Utilities Commission, and is not expected to take effect until the middle of next year, Van Sinderen said.

There is no interim rate hike being sought, he said, and no escalator clause built into the rate hike request to keep pace with inflation.

"Our forecast for growth next year is extremely pessimistic," he said. "Our forecast is so low for next year I don't think it can go any lower."

"We recognize the severe inflationary pressures our customers face," Van Sinderen said. "By increasing our productivity, saving on fuel and gas and introducing cost-saving equipment we have held the line for three years."

"Few businesses can point to a similar record, but now the pressure of inflation has forced us to take action."

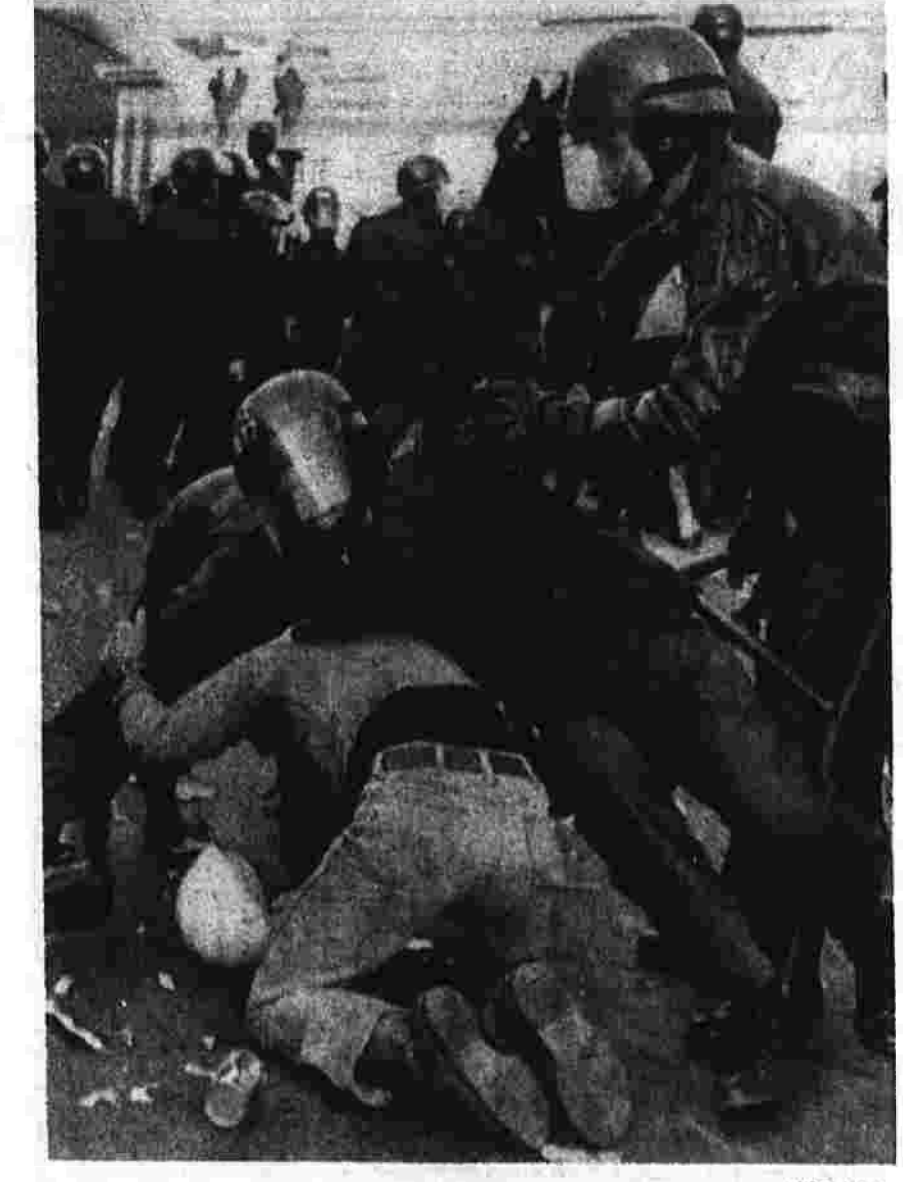
Van Sinderen described the increase as

INSIDE TODAY

Area Profile Pages 10, 14, 15, 23
Bennet honor roll Page 3
Neighbor's Kitchen Page 12
Cable TV Page 29
Downtown Committee Page 29
Thoughts APLENTY Page 19
MCC cagers win Page 19

WEATHER

Connecticut—Cloudy this afternoon with a chance of occasional light rain, high in the 30s to the upper 40s. Rain ending tonight. Lows in the upper 20s to low 30s. Becoming partly sunny Friday, high in the upper 40s.



Riot equipped Boston police wrestle a demonstrator to the ground outside South Boston High School after racial violence flared again when a white youth was stabbed in the stomach allegedly by a black teen-ager school.

Strife Closes Boston Schools

BOSTON (UPI) — Desegregated schools in South Boston have been closed for the rest of the week because of the stabbing of a white student and gathering of an angry crowd of whites outside the area's high school.

The stabbing was the most serious in a series of disturbances at South Boston High School this week. Two black girls were arrested Monday for assault and battery in connection with a fight with white girls, and two black males and a white male were suspended after a cafeteria scuffle Tuesday.

The stabbing victim, Michael Faith, 17, was reported "doing well," but on the danger list at Boston City Hospital. James A. White, 18, a black student from Roxbury, was arrested on a charge of assault and battery with a dangerous weapon.

Hearing of the stabbing, about 700 whites gathered outside the school. About 250 police were sent to the scene to keep order.

Later, it was announced that all schools in South Boston being desegregated under a federal court order would be closed today and Friday.

Meanwhile, a fight at Roslindale High School, another of the 80 schools being desegregated, caused cancellation of classes there Wednesday. School Department spokesman Frank Galvin said about 600 white students attempted to walk out of the Roslindale School in retaliation for an incident on Tuesday when a white girl reportedly was hit in the face by a black male.

"It started peacefully, but several scuffles broke out," Galvin said. "Then it spread. One teacher was knocked down and was injured enough to be sent home."

On Wednesday evening, Julius Bernstein, acting chairman of the Massachusetts Advisory Commission to U.S. Civil Rights Commission, sent a telegram to U.S. District Court Judge W. Arthur Garrity urging "immediate moves to make plain that the court will take a hard line to preserve peace."

The telegram to Garrity, the judge who issued the Boston School desegregation order, said the "present Boston situation (is) critical in our view. Most vital need is to impress upon community (the court's) determination to achieve full enforcement of the law."



Controversial Driveway at Lincoln Center

The Conservation Commission is voicing displeasure with the construction of this unneeded driveway and parking area along the Main St. side of Manchester's Lincoln Center. It is part of the plan for improving access and entry for employees and visitors. When the project is completed, cars will enter from Main St. only at the north end of the building. The existing driveway, at the traffic light at E. Center St., will be filled in, landscaped and closed. The new driveway will turn right at the south end of the building, then will turn right again, winding around Lincoln Center to the Municipal Building parking lot.

Scott's World

Cop Stoops to Acting

By VERNON SCOTT

HOLLYWOOD (UPI) — How can a police officer stomp? Former Detective Lt. Joseph Wambaugh is finding out.

The other day Wambaugh was discovered in a down-at-the-heels neighborhood in Los Angeles slinking around in a navy blue jumpsuit of the police SWAT (Special Weapons and Tactical) squad in pursuit of a felon.

But his gun was filled with blanks. And each time he prepared to bust the miscreant, director Alex Singer cried, "Cut. Let's do it again."

Wambaugh, the cop-turned-prolific-author, has sunk to acting.

"It keeps me off the streets," said an embarrassed Wambaugh, author of "The New Centurions," "The Blue Knight" and "The Onion Field."

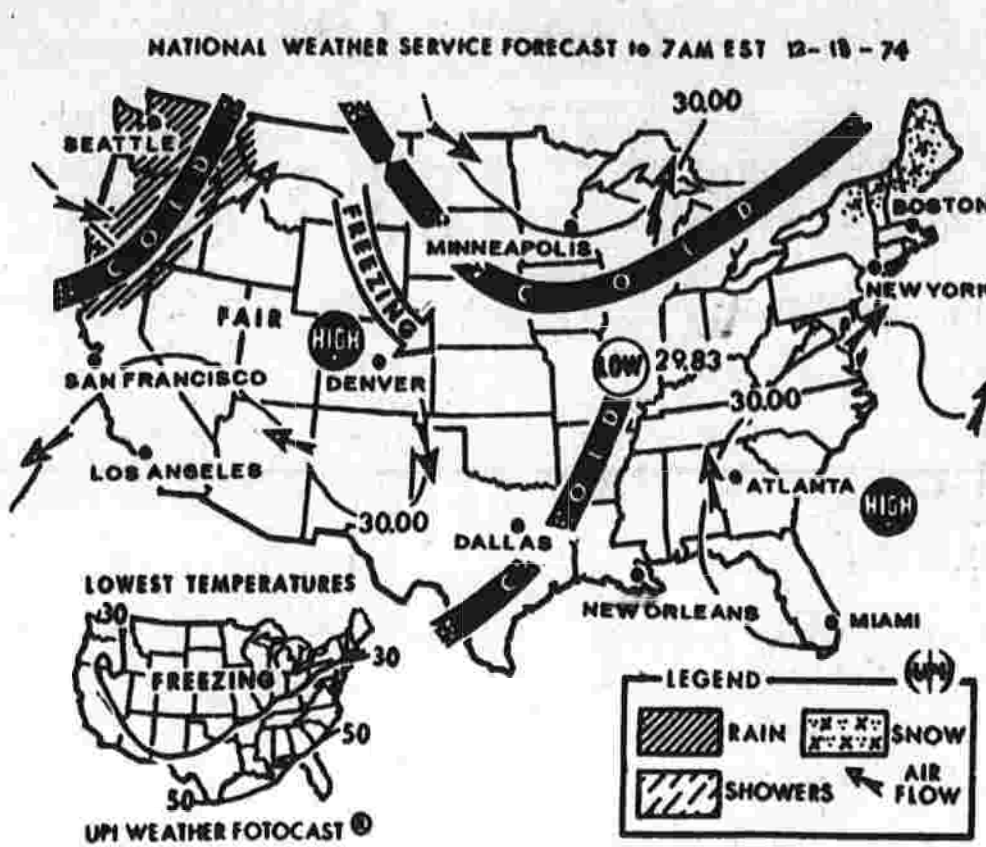
The former fuzz was introduced to show biz when he said "The New Centurions" to movie. He got in deeper when he became production consultant for television's "Police Story."

Now he has taken the plunge altogether, playing a cop (what else?) on an episode of "Police Story." Taking pay for this might be larceny.

During a lunch break he said, "Acting is tougher for me than writing."

Wambaugh will be production consultant on that series, too. He also will rewrite his current novel and have it ready for publication in late 1975.

In any case he won't have to take acting jobs except to get out of the house. His three books have sold some seven million copies, including paperback, which makes him the richest ex-cop in the country.



For Period Ending 7 AM EST Friday, Thursday night will find some snow falling over parts of the north Atlantic states while rain covers most of the northwest corner of the nation.



Noah Beery co-stars as Joseph Rockford, father of private investigator Jim Rockford (James Garner), in NBC-TV's "The Rockford Files," Fridays at 9 p.m.

TV TONIGHT schedule listing programs like 'The Waltons', 'The Professionals', and 'The Longest Yard' with their respective times.

THEATER SCHEDULE listing shows at Burnside Theatre and Showcase Cinemas 1234.

JOYFUL SINGING... strong emotional and religious feeling as simple expressions of holiday joy...

Advertisement for Prague's Shoes featuring Stride Rite boots and Prague's shoes, highlighting waterproofing and durability.

Bennet Honor Roll

- List of students and their scores for the Bennet Honor Roll, categorized by grade levels from Grade 7 to Grade 9.

A Children's Gift of Life

By Lee Roderick... Washington (The Herald) — The 27 students of Charles Grime's fifth grade class in Franklin, Ind., had a problem: Deciding which games to buy with the \$10 prize they had just won for having the most parents at PTA meeting.

CATHOLIC BURIAL advertisement for Saint James Cemetery, 368 Broad Street, Manchester, Connecticut.

Large advertisement for Liggett's Parkade Pharmacy featuring various hair care products like hair stylers, curling irons, and blowers with prices and discounts.

Advertisement for Hardee's 'Pack O' Value' coupons, offering savings on food items and a limited supply of coupons.

Advertisement for lined alpine boots, highlighting their ability to 'conquer' cold feet and offering a 44% savings.

Advertisement for Gus's Restaurant, featuring beer on tap, pizzas, grinders, and spaghetti, located at 803 Hartford Rd.

Advertisement for VFW Post 2046 & Auxiliary, featuring a New Year's Eve Party on Dec. 31, 1974.

Preserve Farmland, Task Force Reports

COVENTRY
 Don Tuttle, executive secretary of the Governor's Task Force on Agriculture, told a group of Coventry residents Wednesday night that the Task Force has completed its final report.
 He will recommend to the governor that the state go on record in favor of preserving 325,000 acres of the 500,000 acres of farm land in Connecticut and that this land should be preserved by the state buying developments to this land.
 The task force is proposing that this land would remain in the ownership of the farmer and that the development rights be purchased by a \$500 million bond issue (to be repaid by a one per cent tax on all real estate transactions in the state).
 Tuttle said that in his opinion once the land is dedicated as agriculture preserve the farmers wouldn't be in all that much of a rush to sell their development rights to the state so that the whole \$500 million would not need to be bonded at once.
 Tuttle told the group that the state has lost 50 per cent of its agriculture land since 1959 and that there are no more than 4,000 farms in the state today. He said the farms provide one-third of the food consumed by Connecticut residents.



Bolton Center School Drama

Greg Gram as Scrooge and David Moske as the Spirit of Christmas Past rehearse the roles they will play Friday when the drama club at Bolton Center School presents an adaptation of Dickens' Christmas Carol. Curtain time is 7:30 p.m. (Herald photo by Holland)

Insurance Rebate Allocated

TOLLAND
 Vivian Kenneson
 Correspondent
 Tel. 875-4704
 The Board of Education Wednesday approved allocations totaling \$15,900 from the \$23,000 rebate by Blue Cross Insurance, although Town Manager John Harkins still maintains that any rebate should be turned into the General Fund.
 Business Manager David Hopewell reiterated that he obtained legal advice that the rebate could be retained by the Board of Education. His opinion came from the legal counsel for the Connecticut Association of Boards of Education.
 He plans to deduct some \$3,500 monthly from the insurance bills until the total rebate is reached. Board member Carol Butterworth quoted Connecticut State Statutes section 10-222 which she said appears to back up the consensus that the action is legal.
 Slate for the bonus monies are: Supplies and materials, \$2,000 for each school; library and audio visual, \$1,000 per school; testing program for third and eighth grades, \$1,000; and implementation of the English and Arts Program, kindergarten through twelfth grade, \$2,900.
 Supplies and materials had been cut by 40 per cent for each of the four schools for this year. Parker School Principal Bob Lincoln told the board that this recommendation included a morale factor.
 "Teachers can spend just so much of their own money on supplies before getting turned off," he said.
 The board had a difficult time acting on where, or even whether, to allocate the monies. A recommendation prepared by Dr. Kenneth L. MacKenzie, superintendent of schools, and other administrators, at the request of the board, also included \$4,400 for the high school athletic programs and \$2,700 for evaluation and PPSIS implementation, which the board did not endorse.
 Hopewell did not have a current report on the status of the lunch program, which he predicts will end in a deficit this school year, for the first time. Some board members felt that a reserve should be held in that event, while others felt that if it did occur it would be an unanticipated deficit and the board should not have qualms about seeking additional funds from the Board of Selectmen.
 The motion to allocate the \$15,900 was passed after four others failed. Anthony Tantillo Jr. moved to adopt all but the

Salmon Says Governors Hold Reins

MONTEPELIER, Vt. (UPI) — Democratic governors have taken control of their party, Gov. Thomas P. Salmon said Wednesday, and may nominate one of their own for president in 1976.
 "Without question," he told a news conference, "the group in control of the mini-convention was the Democratic governors."
 "The nominee may well be a governor or ex-governor," Salmon said, adding he had no desire to be on the national ticket.

Benoit Answers McCoy

VERNON
 It is now apparent that Mayor Frank McCoy's interpretation of the 1973 election returns "borders on a belief that he is annointed rather than elected," Thomas Benoit, Democratic Councilman, said today in reply to a statement issued by the mayor.
 Previously, Benoit and fellow Democrats on the Town Council chastised the mayor concerning a fire study committee and the appointment of a public works director.
 Benoit stated he had heard rumors that the post of director has already been promised to someone and that an ad hoc fire study committee had been meeting on fire department matters without the knowledge of Democrats on the council.
 In his statement, Mayor McCoy asked Benoit to name the person he is supposed to have appointed or the person from whom he heard the rumor. He also charged the Democratic councilmen and James Roche, Democratic Town Committee chairman, with never having "accepted the decision of the electorate in the election of 1973."
 In reply, Benoit expressed disappointment that "the mayor in his lengthy remarks, makes no response to the key questions raised by myself, and Messrs. (Peter) Humphry and (Stanley) Gill."
 He said, "Nowhere does he say that he will or will not open a discussion on the position of director of public works."
 Nowhere does he address himself to the reasons behind the very questionable operations of the subcommittee which has caused so much unrest in the town fire departments."
 He added, "Apparently the mayor believes that by issuing a strongly worded personal attack on me he can coerce me into silence."
 Benoit said that will never happen, noting that he receives calls each day from people in Vernon who believe "in my ability to find a solution to their problems."
 He said he would not betray any confidences in the act of performing his duty to them.
 Benoit also charged the mayor with choosing to ignore the fact that the voters elected 12 councilmen who, by charter, have the sole responsibility for setting town policy.
 "When the mayor talks of dangers to the proper functioning of town government, I say that his brand of secrecy is the greatest danger and I am not alone in this belief," Benoit stated.
 The mayor, in his statement,

The Herald

ROCKVILLE HOSPITAL NOTES

Admitted Wednesday: Kenneth Barnes, Pinney Hill Apts., Rockville; Charles Bassham III, Prospect St., Rockville; Mary Batis, Regan Rd., Rockville; Sharon Bloniarz, West Rd., Rockville; Joseph Bossie, Sulpic Village, Ellington; Deborah Clifford, Pleasant St., Rockville; Anna Dudek, Beach Rd., Tolland; Joan Faulkner, Lake St., Bolton; Kenneth Hill, Hillside Dr., Ellington; William Kania, Hartford Tpke., Rockville; Norma Kennedy, Hubbard Dr., Vernon; Mary Naisitsky, RFD 3, Rockville; Richard Parker, Woodland St., Rockville; Heidi Ranslow, Terrace Dr., Rockville; Annette Rowe, Enfield; Sherril Smith, Bancroft Rd., Rockville.
 Discharged Wednesday: William Dancose, Prospect St., Rockville; Mary Dillon, Patricia Ott, Vernon; George Eiss, Ward St., Rockville; Pamela Fleury, White Birch Dr., Tolland; William Jones, Olcott St., Manchester; James Leaky, Mt. Vernon Dr., Vernon; Steven Meehan, Hartford; Kristina Otten, Irene Dr., Vernon; Joan Floridan, Eleanor Dr., Vernon; Tanetta Rocks, Eva Circle, Vernon; Darlene Scepanik, Talcottville Rd., Vernon; John Szrejna, South St., Rockville; Marie Thibodeau, Enfield.
 Births Wednesday: A son to Mr. and Mrs. Archangelo D'Amato, Washington St., Vernon; a daughter to Mr. and Mrs. Frank Tantillo, Rosewood Dr., Vernon.
 Benoit commented, "Perhaps now that the Republicans have opened their committee meetings to public scrutiny, they will be less inclined to speculate on our happenings and concern themselves with their own imperfections."
 Benoit commented, "Perhaps now that the Republicans have opened their committee meetings to public scrutiny, they will be less inclined to speculate on our happenings and concern themselves with their own imperfections."

PZC Re-Elects Mastandrea

HEBRON
 Anne Dallaire
 Correspondent
 228-3267
 The Planning and Zoning Commission has unanimously re-elected Salvatore Mastandrea of London Rd. as chairman of the Commission and Charles Eaton of Hope Valley Rd. as secretary for a one-year term.
 In other business Tuesday, the commission voted that a public hearing be held Jan. 7, at 8 p.m. in the Town Office Building for the proposed Eisemann subdivision.
 The commission asked Atty. Bruce Kalom, who is representing Eisemann to remove the 8.3 acres which was proposed as open space from the map with the understanding that when the back land is subdivided that provisions satisfactory to the commission will be made regarding open space. The area will be based upon the original 162 acres.
 The commission asked Richard Mihok, who submitted a preliminary plan for Frankel Acres, Rt. 66 and Burrows Hill Rd., to change the name of the proposed subdivision. Fire Chief Donald Griffin requested the change because there is another Frankel Acres in Lebanon, he feared fire trucks might be sent to the wrong area.
 The commission signed the application for a beer permit for the Hebron Pizza House, which is owned by Nick Takaudas.
 A memo was received by the commission from Frank Richardson, Hebron registered sanitarian, regarding Shangrihas Subdivision, on Crouch Rd., Amston.
 Richardson has conducted an on-site inspection in conjunction with a review of all tests taken by the state health department. The review covered all those lots not presently built on in the subdivision.
 Bruce Kalom, who is representing Eisemann to remove the 8.3 acres which was proposed as open space from the map with the understanding that when the back land is subdivided that provisions satisfactory to the commission will be made regarding open space. The area will be based upon the original 162 acres.
 The commission asked Richard Mihok, who submitted a preliminary plan for Frankel Acres, Rt. 66 and Burrows Hill Rd., to change the name of the proposed subdivision. Fire Chief Donald Griffin requested the change because there is another Frankel Acres in Lebanon, he feared fire trucks might be sent to the wrong area.
 The Jones-Keefe-Boston American Legion Post 95 annual children's Christmas Party for members' children and grandchildren is Sunday at 1 p.m. at the Post Home.
 Any member planning to attend who has not sent back the form is asked to contact either Robert Croston, post adjutant, or Geraldine Grant, unit president by Friday.
 A decision is made as to whose responsibility it will provide and maintain road drainage extensions and to remove such drainage away from affected lots. All such drainage should be designed and certified by a registered engineer.
 Re-testing of all lots during the wet months between Feb. 1 and May 31 to determine reliably the maximum high ground water elevations on these lots.
 The submission of certified, as built, plot plan by a registered professional engineer showing all design criteria for septic systems and ground water controls (under drains) on those lots having a high ground water condition which warrants the installation of some form of a modified septic system.
 All such modified plans shall be submitted to the state health department prior to approval by the Hebron health director, American Legion.

HOLIDAY VALUES AT FORBES & WALLACE



A 17.99 CORNWALL OVEN. Bake or broil with Cornwall. Easy to use controls. Pullout tray & rack. Window style door. Continuous cleaning. REG. 26.99



C 34.99 TOASTMASTER TABLETOP OVEN. Bakes & broils at push of a button. Temperature from 200°-500°. Glass window, two chrome racks. REG. 37.99



D 49.99 LARGE CORNWALL OVEN. Push button controls, continuous cleaning, porcelain drip pans, 15x7x10 1/4" interior. REG. 54.99



EUREKA POWERTEAM VACUUM CLEANER. Combines canister suction power with beating, sweeping action of an upright. Exclusive rotomatic head cleans low nap to high shag. REG. 129.99



HOVER DIAL-A-MATIC VACUUM. Easy cleaning with power drive. Action grip controls the direction and speed. Automatic rug adjustment, power dial regulates suction. Includes deluxe attachments. ORIG. 159.99



APPLE COASTERS (6360) Cleverly shaped, stain finished wood with cork inserts. Set of 8 Pear coasters (6361), 2.99



PLANT MISTER (1969) Clear glass with precision plunger produces thousands of minute droplets forming a mist. 2.99



FRENCH GLASS SALAD SET (1576) Salad bowl measures 8" diameter. Chrome fork and spoon match rim of salad bowl. 7.99



STEAK KNIFE SET (7595) Wooden handles, stainless steel. Six knives on decorative Early American wooden holder. 7.99



2.19 COLORFORM RAGGEDY ANN TEA PARTY. Playing area pops up into a 3-dimensional party table. Plastic place settings STICK TO BOARD. No scissors. REG. 3.29



2.49 MEGO® DINAH MITE™ DOLL. She sits or stands. Pose her on one leg or two. Provides many hours of imaginative fun. REG. 3.47



4.99 IDEAL MISTER MO™. A simple push gets this motorized figure in motion. He goes forwards, backwards or in a spin. No batteries, no winding. REG. 6.99



5.99 IDEAL REBOUND. Bank shots, angle shots. Show your skill with this two cushion game. Amaze your friends! For two to four players. REG. 7.49



WOK BOWL (1726) 12" diameter steel bowl with cover and stand. Recipes and instructions included. 7.99



CURRIER & IVES WALL PLAQUE (4149) Decorative ceramic tiles mounted in wood frame. Measures 5 1/4 x 18". Deplcts four seasons. 7.99



FLOWER CART TOOL SET (4765) Wooden wheelbarrow with miniature garden tools. Rake, hoe, shovel, scissors, plant mister. 9.99



CERAMIC PLANTER WITH HANGER (3000) Italian pottery hanging planter. Colorfully attractive. 9.99

USE YOUR FORBES' CHARGE, BANKAMERICARD OR MASTER CHARGE

1
2

D
E
C

1
2

Firemen Seeking To Update List For Safety Decals

VERNON
The Rockville Fire Department reminds residents of its "Rescue Identification Program," which seeks to locate those persons who would be unable to safely evacuate their homes in the event of a fire or other emergency.
The department wants to keep an up-to-date list of these persons for whom they will provide highly visible decals to label the doors and windows of rooms occupied by them.
In the event of a fire or other emergency requiring evacuation of the home, the firefighters would easily spot the decals and safely evacuate the disabled person.
If anyone has a member of his family, a friend or neighbor, who should have this service, they should call the Rockville Fire Department, 875-7751.
The department's Fire Prevention Bureau, headed by Raymond Walker, also wishes

to remind residents about taking safety precautions during the holiday season concerning Christmas trees and holiday lighting.
Live trees should be cut fresh and be kept well-watered; artificial trees should be UL approved; trees should not be kept near sources of heat and should not block any exits.
Decorations should also be flameproof or flame resistant; lights, cords and plugs should be checked before using; fixtures used outdoors should be approved for that purpose; and lights should not be strung on metal trees.
The fire department also urges good housekeeping practices such as removing all wrappings, boxes and unused decorating materials.
And the bureau emphasizes that it is especially important not to leave children or elderly persons without proper supervision.

The Herald

Bolton Honor Students

Donna Holland
The following students have been named to the honor roll at Bolton Center School for the first quarter.
The lone student attending the A honor roll was Erin Bakamas, Grade 8.
To make the A honor roll, a student must have all A's in major subjects with no more than one B in a minor and no less than B's for effort and citizenship in all subjects.
Grade 8 students attaining

the B honor roll are Laura Briggs, Cheryl Garno, Katherine Nielsen, Carole Rose, Jani Ryba, Ann Stoppelworth, Jonathan VanDine, Christine Whitham, Karen Manning, Joan Ratic, Sherry Richardson, Sherry Young and Michelle Vancour.
Grade 7 students attaining the B honor roll are Darby Barnard, Teresa Landrey, Adam Teller, Laurie Gagnon, Philippe Pellerin, Christopher Rich and Gary Vine.

New Books at Library

BOLTON
Donna Holland
The following new acquisitions are now available at Bentley Memorial Library.
Fiction books that have been added are Delderfield, Return Journey; Fowles, The Ebony Tower; Joffe, A Bag of Marbles; Knowles, Spreading Fires; Mikes, Spy Who Died of Boredom; Silverberg, Sundance and other time-fiction stories; Smith, Death of the Detective; Tidyman, Line of Duty; West, Harlequin; Wiltzer, Ending.
Non-fiction books that have been added are Anderson, Home Appliance Servicing; Arnold, Check List for Emergencies; Bacharach, How To Do Almost Everything; Baha'u'llah, Bahai World Faith; Bailey, Guns and Gun Collecting; Baker, Exclusive; Story of Pat Hearst; Berlitz,

Bermuda Triangle; Bickel, Facing Starvation.
Chess, How to Help Your Child Get the Most Out of School; Commager, Spirit of 'seventy-six'; Diehl, Supertalk; Drucker, Management; Eisenhower, Strictly Personal; Florence, Collector's Encyclopedia of Depression Glass; Greenwald, Be the Person You Were Meant to Be; Jackson, Coping With the Crises in Your Life.
Janson, History of Art; Julty, How Your Car Works; Koladis, Thru and the Rose; LaFarge, Pictorial History of American Indian; McDowell, The Revolutionary War; Moser, SuperShip; Wey, Wall Street Gang; Rather, Palace Guard; Rosenberg, Naked is the Best Disguise; Strax, Early Detection; Tinner, Longestest; the Fear of Love; West, Upstairs at the White House.

Royal

QUALITY ICE CREAM

We at Royal are proud of our ice cream specialties. In using the finest ingredients available, fresh cream and fine flavors, we are sure you will notice the difference in our ice cream!

The *Princess's*

Try our Blood and Wreath PECAN HUT ROLL, CHERRY CHEESE CAKE, JIMMY ROLL, and "Bourbon" the King of French Cheesecake.

Next Time, Order One or More of Our **ICE CREAM CAKES** - The perfect dessert for that *Special Occasion!*

WE HAVE 35 FLAVORS IN 1/2 GALLONS TO CHOOSE FROM!

Visit Our Showroom at
27 WARREN ST., MANCHESTER, CONN.
649-5358

KINGS

SELF-SERVICE DEPT STORES

ONLY 10 SHOPPING DAYS TIL CHRISTMAS!

Broad Street - Manchester
Open 10 A.M. to 10 P.M. Daily

Open 9am to 11pm til Christmas

Christmas Costs You Less at King's!



GENERAL ELECTRIC
Hot Lather
988

Heated shave cream dispenser uses over 30 leading brands.



CLAIROL
Skin Machine
988

Aids complexion care. Complete with 2 bars of special soap.



IONA
Electric Shoe Polisher
788

Fast, easy way to keep all your shoes shined to perfection!



BROTHER
700 Watt Styler-Dryer
1190

With 2 speeds, 4 styling attachments for full versatility.



WATER PIK
Shower Massage
2990

Shower head and special hose attachment. Massage with every shower! Easy to install.



GENERAL ELECTRIC
Electric Knife
999

Carve and slice like a chef! Odor, grass and heat resistant. Handle fits your hand. #EK15.



GENERAL ELECTRIC
Coffee Maker
996

Makes up to 6 cups of perfect perked coffee every time! Brews, stops, holds at perfect serving temp. #CM4.



HAMILTON BEACH
3-Speed Mixer
648

Lightweight, easy-to-handle mix-itte with 3 speeds. Beaters eject for easy cleaning. Model #87.



REGINA
Electrikbroom Vacuum Cleaner
2790

Features rug pile dial nozzle and edge suction for hard to reach areas. Large dirt cup. No need to use bags.

2 SPEED DELUXE ELECTRIKBROOM
3390



MIRRO 3-QUART Corn Popper
396

Special base coating speeds up popping action. Even-heating polished aluminum shell with heat-proof handle, legs. #M9233-40.



Panasonic COMPACT Microwave Ovens
26995

A lightweight, compact, versatile unit! Set 15-minute timer and press "cook" button—that's all you have to do. Automatic shut-off, safety-sealed body.



SCHICK
Warm and Creamy
988

Complete with heating unit, cleaning cream, moisturizer.



LADY REMINGTON
Mist Hair Curler
899

Sealed heating system. 20 rollers plus clips. #HC8.

KINGS

SELF-SERVICE DEPT STORES

BROAD STREET MANCHESTER PARKADE

Over 100 Stores Across the Nation

Make King's Your Christmas Store...and Save!



ASSORTED Wooden Trucks
299

Safe wooden action trucks for preschoolers. Grass, street sweeper, lots more. #200R



KENNER, STEVE SCOUT
Boy Scout
348

Over 9" tall, he gives official scout salute when you move arm. Hands hold objects. In uniform. #7000.



FISHER-PRICE
Play Family Circus Train
944

4-piece train with ringmaster, clown, engineer, circus animals. Engine, gondola, caboose. #991



MARX
Rock 'em Sock 'em Robots
1390

2 sets of controls keep 'em moving. Left jabs, right hooks, defense, offense! #5015



GENERAL ELECTRIC
"Mickey Mouse" Phonograph
1688

Plays 33's and 45's. Rugged portable case, built for ride. Unique "Mickey Mouse" tone arm. #RP3122



FISHER-PRICE
Play Family Castle
1099

Storybook castle with 4 towers, battlement house, lots of play features and figures. #993.



15 PAIRS OF ANIMALS WITH NOAH AND HIS WIFE
Noah's Ark
200

Aardvark to zebra! Famous Ark doubles as storage chest. Colorful molded plastic replica. For hours of fun!



MAGNUS
Organ Set
3490

Electric organ with full octave range. Music rack, number-note music book, bench with book storage compartment. Fun for everyone! #665P.



MATTEL
Knit Magic
899

The new, easy way to knit! Kit comes with Knit Magic machine, 3 oz yarn, tension gauge. #7830



FLAT FOLD Gift Boxes
99c

Pkg of 4 snap-up boxes. Perfect for shirts, lingerie, accessories.



SET OF 25 Outdoor Lights
348

Weather-proofed for outdoor use, multiple-wired. On pre-tested strings. #425.



7 1/2-FOOT VINYL Scotch Pine Tree
2999

Traditional upwept shape, new growth moss-green tips, exclusive 4-tip design.



3 LIGHT Candeliers
188

Made of ivory colored plastic. With cord, bulbs. #37.

Congress Given Gloomy Forecasts

WASHINGTON (UPI) — Three prominent economists gave Congress gloomy assessments of the nation's economic future Wednesday. One called the prospects "frightening" and another warned of a "near depression" with 8 per cent unemployment next year.
Otto Eckstein, a Harvard University professor, Arthur M. Okun of the Brookings Institution and Murray L. Weidenbaum, a former Nixon administration assistant Treasury secretary who teaches at Washington University in St. Louis, appeared before the Senate Budget Committee.
Weidenbaum, the least pessimistic, said the current recession "seems likely to be longer and deeper than has been anticipated" and warned that policies to stimulate employment are bound to touch off more inflation.
Okun, more pessimistic, said, "In the past few months, the nation's economy has been deteriorating at a rapid rate that, to me, in all candor, is frightening. It simply has no parallel in my professional career."
Eckstein, the most pessimistic, said concern about inflation should be set aside to concentrate on trying to avoid a depression.
"Whether the fight against inflation is won or lost, the risk of recession degenerating into near depression has now reached a point where common prudence requires stimulus," he said.
"In the last three months, the economies outlook has deteriorated so badly that unemployment persisting in the 8 to 10 per cent area becomes a real possibility."
"There is no way to tell what such an experience would do to the American people's attitudes toward our economic system or toward each other. It would not be a depression like the 1930s, but it would be a setback not soon forgotten."

CARD Gallery

MANCHESTER PARKADE

PATCHWORK DOG or SNAKE \$5
Other Animals \$3.99 to \$5.99

CALENDERS
Humoral Original Linen Cloth \$4
Other Linen Calendars \$2.25
Full Door Calendars \$8
Hallmark Scenes — Animal Calendars

CHRISTMAS STOCKINGS
Cotton, Spun Red & White \$3.98

CANDLES
by Lenox \$1.50, \$2.25
CANDLE HOLDERS 70c to 85c
CANDLE HOLDERS to \$3.50

DRIED FLOWERS
Under Glass Frames \$6.98
OTHERS 3.98 to 17.98
ARRANGEMENTS 8.98 to 38.98

Party Supplies
Christmas Cards
Gift Wrapping
Exotic Oriental Tree Hangings

Extra Special PETIT FOURS \$1.19
Reg. \$1.75
8-oz.

ANIMAL PLANTERS from \$8.98
LIVE PLANTS 89c to \$25

1 2 DEC 1 2

St. Lucia Festival Set For Saturday



Reliving the legend of St. Lucia are Susan Cain, center, as Lucia, and her attendants, Melissa Hawkins, left, and Adrienne Dufour. Participating in the re-enactment are the Tomlans, left to right, David Dour, Nathan Hawkins and Daniel Hawkins. (Herald photo by Dunn)

The Scandia Lodge No. 23, Vasa Order of America, will present its annual St. Lucia Festival Saturday at 7:30 p.m. at Emanuel Lutheran Church. The pageant tells of St. Lucia who lived in Italy during the early years of Christianity. The story of her goodness and kindness was brought to Scandinavia by the early Christian missionaries.

In Sweden, the Lucia festival tradition begins the Christmas season early on the morning of Dec. 13.

Usually, the eldest daughter of a household plays St. Lucia and wears a crown of candles as she carries a tray of coffee and cakes to the rest of the family who are in bed.

Miss June Werdelin is director of the pageant. Assisting her are Mrs. Clara Stowell, Miss Justina Johnson and Miss Lila Strandin.

Mrs. David Hawkins will accompany the singers.

Refreshments will be served by Mrs. Gerda Orr and Mrs. Elvira Anderson, co-chairmen, and their committee.

The public is invited to attend.



Pack 53
Cub Scout Pack 53 presented awards at its recent meeting at Waddell School. Den 5 was in charge of the opening and closing ceremonies. Den 7 organized a "shoe" game.

Receiving awards were Jeff Shaw, Steven Dietz, Brian Stein, Danny Carter, Bear badges; Glenn Juras, Dana Noonan, Jacques Tardiff, Mike Hutchinson, Glenn Busby, Bobcat badges; Brian Kost, gold arrow points; Marty Kosis, gold and silver arrow points; Danny Carter, perfect attendance for one year.

Webelo activity badges were awarded to John Anton, Scott Carone, Russell Smith, John Thurston, Dean Russell, John Thurston was a Webelo leader.

Richard Thurston of Boy Scout Troop 157 and Wayne Smith of Troop 27 received appreciation certificates for their work at the Webelo campout at Camp Johnson, Andover.

Pack 112
Cub Scout Pack 112 recently presented awards at its meeting at Washington School. Webelo Den 1 conducted the opening ceremonies.

Receiving Webelo activity awards were James Laraja, three badges; David Barlow, Gary Davenport, Gary Hurley, Tony Kvadas, and Kevin McGuire, two-year pins; Roland Lesage, Timothy Parsons, Thomas Seymour, David Lalibere, Herman Byram, Andrew Doughty, Richard Scagnelli, one-year pins.

Committee members receiving service awards are Art Raymond, chairman, 9 nine-year pin; Ann Raymond, treasurer, eight-year pin; Nancy Doughty and co-manager Frank Davenport, two-year pins; Sue Davenport and Marlene Seymour, one-year pins.

The program included a film, "K2 Performers," presented through the courtesy of Art Benson and The Alpine House. Den 1 conducted the closing ceremony.

ENGAGED

The engagement of Miss Yolande Anne-Marie Savoie of Glastonbury to Raymond Berthiaume of Manchester, has been announced by her parents, Mr. and Mrs. Desire J. Savoie of Glastonbury.

Mr. Berthiaume is the son of Mr. and Mrs. Richard Berthiaume of 40 Litchfield St. The bride-elect is a 1974 graduate of East Catholic High School and is employed at The Travelers Insurance Co.

Her fiancé, a graduate of Manchester High School, attended Manchester Community College. He is employed by The Slinger Co.

No date has been set for the wedding.

The engagement of Miss Carol Jean Cobrelli of New Britain to Robert Russell of Glastonbury, has been announced by her parents, Mr. and Mrs. Emil Cobrelli of New Britain.

Mr. Russell is the son of Mr. and Mrs. Robert R. Russell of 214 Ferguson Rd. The bride-elect is a graduate in fine arts of Paier School of Art in New Haven.

Her fiancé, a 1968 graduate of Manchester High School, attended the University of Connecticut with a degree in nutrition in May.

Her fiancé, a graduate of Hamden High School, will graduate from the University of Connecticut with a degree in chemistry.

A summer wedding is planned.

IN THE SERVICE

Joseph Lavitt of 277 Box Mountain Rd., has entered the U. S. Air Force Delayed Enlistment Program until he reports for active duty on Feb. 27. He is a graduate of Rockville High School and attended the University of Hartford and the University of Colorado. After completion of six weeks of basic orientation at Lackland Air Force Base in San Antonio, Tex., he will receive advanced technical training for which transferrable college credits will be granted.

Correction

In the announcement of the engagement of Miss Deborah Waskiewicz of West Stafford to Donald Ratti of Hebron, which appeared earlier this week in The Herald, it was incorrectly reported that the bride-elect's mother, Mrs. Mary Waskiewicz, lived in Newington. Miss Waskiewicz makes her home with her mother in West Stafford.

St. James Plans Concert Tuesday

The St. James School Youth Chorale will present its annual Christmas concert Tuesday at 7:30 p.m. in the school auditorium.

The chorale will open the program with "Come, Jesus, Holy Son of God," by Handel. Denise Poudrier will play the congo drum for the next selection, "African Noel," by Lewis, followed by "What Gift Shall We Give Him" by Prentiss with soloists Lisa Holmes, Ruth Garoppola, and Beth Murray.

The St. James Modern Dancers will interpret the theme "We Wish You a Merry Christmas," and "Patapan," under the direction of Mrs. Judith Cassarino.

The second part of the program will feature the chorale singing "Sleep, Little Jesus" by Preston with guest flutist Theresa Maccarone, a junior at East Catholic High School, and finger cymbals by Ruth Garoppola and Chris Martin.

The chorale will conclude the program with "Christmas Calypso" by Yalaxis, featuring Judy LaFond on maracas; Debbie Perrone, bongos; and Sharon Kuczyński, claves.

Also, "It's the Most Wonderful Time of the Year" by Pola and "Silent Night."

The group is under the direction of Mrs. Edmund Gorman. Mrs. John Garoppola is the accompanist.

Contributions will be accepted at the door.



ABOUT TOWN

The Junior Auxiliary of Manchester Memorial Hospital will have a bake sale Sunday at 10 a.m. at the Highland Park Market. It is the auxiliary's first fund-raising event. All proceeds will go to Manchester Memorial Hospital.

Edwin M. Edwards, state surgeon of the Veterans of Foreign Wars (VFW) requests that members of both the Department of Connecticut, VFW, and its Ladies Auxiliary, plan to entertain the veterans at Rocky Hill State Veterans Hospital, Friday, dinner at the hospital will be at 6 p.m. followed by a visiting period at 7.



Nova Photo



Naylor Photo

Regal's

Manchester and Vernon

20% OFF

our entire stock of men's suits, sportcoats and all-weather coats

SELECT GROUP MEN'S WINTER

CAR COATS \$49.90

Solids & Plaids, 100% Wools...Deep Orton Pile Lined...Sizes 38-48
OUR REG. TO \$85.00

select group

men's knit \$9.90

slacks reg. to 25.

ARROW LONG SLEEVE DRESS SHIRTS \$7.99

Doubleknit Polyester...Sizes 14 1/2-32 - 17-35...Blue, White, Tan, Yellow. OUR REG. \$12.00

FAMOUS NAME CORDUROY

SPORT SHIRTS \$7.90

EXCELLENT SELECTION OF SOLID COLOR COTTON CORDUROYS... Values to \$12.

SELECT GROUP FAMOUS NAME

SWEATERS \$9.90

MANY, MANY COLORS TO SELECT FROM... S - M - L - XL Values to \$12.

Free Alterations!

REGAL MEN'S SHOP

"CONNECTICUT'S LARGEST and MOST COMPLETE MEN'S STORE"

MAIN STREET, MANCHESTER TRI-CITY PLAZA, VERNON

OPEN EVERY NIGHT UNTIL 9 P.M. NOW THROUGH DEC. 23rd

*excluding Fair Trade items and Leisure Suits

FROM YOUR NEIGHBOR'S KITCHEN

By VIVIAN FERGUSON

Mrs. Dreselly makes "picture cookies."

The making of springerle at Christmas-time is a German tradition. This is a hard cookie sometimes called "picture" cookie. It has a raised design that is made by pressing the rolled-out dough with carved blocks. Sometimes, a special rolling pin is used.

The cookies are rectangular or square in shape, the designs varying from one craftsman to another and cover a variety of subjects. Traditionally, anise is the flavoring though Nan Dreselly of 30 Tuxia Trail, Bolton prefers to use lemon.

Last year, Nan asked her father-in-law if he could borrow a mold that was brought from Germany many years ago. At Christmas, she was surprised with the gift of her own hand-carved mold beautifully executed by the 82-year old gentleman, a retired wood-carver who had practiced his trade in many churches.

Andrew Dreselly, who lives in Cambridge, Mass., made one change in the mold he gave to Nan. He faithfully followed all the designs except one. The deer was repeated, an apple tree, a wild turkey, a rabbit, some flowers, etc. One of the squares on the anise mold depicted crossed German flags. Nan's mold contains crossed American flags.

When you first taste this cookie after baking, it will be soft but will harden within a few days. The German people take a bite of cookie, hold it in the mouth, then sip hot coffee or wine through the sweet.

Springerle is pronounced springer-lee. After the molds are pressed down on the dough, a sharp knife is used to cut the cookies apart before they are put into the oven. These cookies should not brown. They should be a very delicate tan in color. To the uninitiated, you may think you are taking them out of the oven too soon.

Because the cookies harden, they can be kept indefinitely. You can make them as early as the beginning of November to be kept throughout the holidays. Store them in any cardboard box, lined with aluminum foil, placing waxed paper between each layer.

During the energy outage of last December, Nan had all her cookies sitting in boxes atop the kitchen refrigerator. There they stayed for three days and two nights. They came out beautifully and in good shape for the holiday.

When making the springerle, Nan leaves the molded cookies to stand on the lightly-greased cookie sheets overnight. This sets the dough. She cautions that you must be generous with sugar both in dusting the mold and the dough to avoid sticking.

Nan works part-time at the Connecticut Natural Gas Co., Hartford. As a customer relations representative, she listens to problems on the telephone, then punches a computerized device, which relays the information to the proper department.

Nan's husband, David, is a selectman of the town of Bolton. He is employed as a real estate appraiser by Richard H. Barry. On Christmas Eve, after singing with the choir of St. Maurice's Catholic Church, he and Nan will spend a quiet time together. While the four children are sleeping, they will share a glass of wine and open one gift to each other. On Christmas morning the rest of the gifts will be opened with Matthew 14, Susan 12, Jean 12, Jean 9 and James 8.

David helps with the Christmas dinner. He always prepares the turkey stuffing and it varies. Sometimes it will be made with oysters or mushrooms. One year, he used candy nuts. Nan will serve both white and sweet potatoes and fresh carrots from their summer garden. Yes — fresh carrots.

The Dresellys keep the carrots on their screened-in back porch which is covered with plastic for the winter. They have filled plastic wastebaskets with dirt from the yard and the carrots are kept points down, just as they grow, in the sand. Any container can be used for this purpose and you can keep layering the carrots as long as you keep the root ends down.

Along with the springerle or "picture cookies," Russian teacakes are also traditional at Christmas in the Dreselly household. The recipe was given to Nan years ago by a former neighbor. She has made them every year of her marriage.

Springerle
German "Picture Cookies"
1 tablespoon butter
1 lb. sugar (2 cups equal one lb.)
4 eggs, one at a time
1 lb. flour (4 cups equal one lb.)
2 teaspoons baking powder
1/2 teaspoon salt
Cream butter, lemon rind and sugar. Add eggs, beat thoroughly. Add remaining ingredients. Roll out 1/4" thick and press pictures. Note: Use confectioners sugar generously on mold or rollers, and beneath dough. Lightly grease cookie sheets. Put cookies on sheets and let stand overnight. Bake at 325 degrees 8-10 minutes, until

firm but do not brown. Cookies should be light tan. Store in cardboard boxes lined with aluminum foil and layered between waxed paper. Note: A double recipe makes about seven cookie sheets of approximately 50 cookies each.

Russian Teacakes
Mix thoroughly 1 cup soft butter, 1/2 cup sifted confectioners sugar, one teaspoon vanilla.
Sift together and stir in 2 1/2 cups sifted flour and 1/4 teaspoon salt.
Mix in 3/4 cup finely chopped nuts. Chill dough. Then roll into 1" balls. Place on ungreased baking sheet (cookies do not spread). Bake 10-12 minutes at 400 degrees until set but not brown. While still warm, roll in confectioners sugar. Cool. Roll in sugar again. Makes about 4 dozen one-inch cookies.

SPECIAL NOTE: The response to my request for the sugarcake recipe has been overwhelming. I will incorporate as many as possible in the column of December 26. Also, during the past few months, my mail has been extremely heavy which pleases me no end. Remember, I only write one column a week and for those who have contributions, my mail will be hearing from me after the first of the year.

a Gift of Pewter...

THE GIFT WITH A DIFFERENCE

Pewter has a traditional elegance not found in ordinary holloware. For those who love the classic shapes a gift of pewter will mean more. Come in and choose from our contemporary or authentic reproductions in fine pewter.

The Treasure Shoppe
Two Generations For Generations
MANCHESTER PARKADE

100 MENUS

School Cafeteria menus which will be served in Manchester Public Schools, Dec. 16-20, are as follows:

Monday: Salisbury steak with gravy, buttered carrots, mashed potato, bread, butter, milk, and chocolate pudding.

Tuesday: Grinder, applesauce, milk, cream.

Wednesday: Frankfurt on a roll, baked beans, cole slaw, milk, peaches.

Thursday: Baked lasagna, meat sauce, tossed salad, bread, butter, milk, jello with topping.

Friday: Half-day session — no lunch.

HIGHLAND PARK

"The Choicest Meat In Town!"

317 Highland Street, Manchester

Shop at Our Service
Meat Counter, Where
You Can See BOTH
Sides of The Meat
You Buy — "The
Choicest Meats In
Town!"

U.S.D.A. CHOICE MEATS!

All Meats Are Freshly Cut; They're Never Pre-Packaged!

USDA CHOICE BOTTOM ROUND ROAST \$1.19	USDA CHOICE TOP ROUND ROAST \$1.29	USDA CHOICE BACK OF RUMP ROAST \$1.59	USDA CHOICE EYE OF ROUND ROAST \$1.85
USDA CHOICE TOP ROUND STEAKS \$1.69	USDA CHOICE CENTER CUT SHANK MEAT 99¢ lb.	USDA CHOICE CUBE STEAKS \$1.79	USDA CHOICE SIRLOIN TIP ROAST \$1.59
		USDA CHOICE TOP SIRLOIN ROAST FROM ROUND \$1.49	

Grocery Specials

Heinz Family Size KETCHUP	49¢
Pillsbury Strudel Swirl CAKE MIXES	89¢
Kleenex Assorted FACIAL TISSUE	4 for \$1
Glad Spray — All Scents DISINFECTANT	3 for \$1
Sweet Life — Stuffed SPANISH OLIVES	2 for 89¢
SAW Alaskan King — SAVE \$1.00 CRAB MEAT	\$2.99
Royal Crown Filled Devil Food, Raisin, Oatmeal COOKIES	89¢

Frozen Foods & Dairy Specials

Birds Eye COOL WHIP	49¢
Real Gold — Sliced STRAWBERRIES	49¢
Salt E Sea FRIED CLAMS	49¢
Stouffer's CUP CAKES	89¢
Snow Crop ORANGE JUICE	4 for 99¢
Roman 10 pack PIZZA	\$1.09
Delight Oleo margarine MARGARINE	49¢
Hoods EGG NOG	89¢

Just Arrived!

FRESH, LIVE FROM MAINE AND KICKING

LOBSTERS \$1.99

lb.

Produce

"Still Fresh With the Best"

GRAPEFRUIT 69¢
5 lb. bag FLORIDA SEEDLESS WHITE OR PINK ORANGES 69¢
5 lb. bag FRESH GREEN SPINACH 39¢
CHENEY ORCHARD MOUNTAIN APPLES 59¢
5 lb. bag

STORE HOURS:
OPEN MON. & TUES. 'til 6:00;
WED., THURS., FRI. 'til 9:00;
SAT & SUN. 'til 6:00

Specials Are Good Thru Saturday, December 14, 1974



Santa Visits Hebron School

Youngsters from Hebron Elementary School visit with Santa. At left front is Robert Steward, behind him is Andrew McLaughlin. At right front is Patrick Sullivan, behind him is David Nelson. Everyone knows who is in the middle. The visit was part of a PTO-sponsored Santa workshop at Hebron School and at Gilead Hill School. The boys and girls bought presents for their families. (Herald photo by Dallaire)

Students Dance For Patients

SOUTH WINDSOR
Judy Kuehnel
Correspondent
644-1364

Students of South Windsor's Lynn Cross School of Dance performed recently for patients at South Windsor Convalescent Home.

Performing were Colleen Shafner, Diane Kennedy, Sally Lockery, Kellie Hayes, Amy Champagne, Denise Nasuta, Alison Plumley and Nancy Otten.

The schools assistant teacher, Miss Mary Duprey also performed.

Road Closed
South Windsor Public Works Director Emil W. Lucek has

asked motorists to avoid using Piervie Rd. during the hours it is closed for reconstruction work.

Repairs To
Scout David Schroeder, 90 Kelly Rd. is hoping to make his Eagle project pay off for needy children in the Hartford area.

He is collecting basically sound toys that need a nail or a touch of paint, and repairing them. When the work is completed the toys will be donated to the Revitalization Corps in Hartford.

Helping him with this project will be other scouts from Troop 364 of the Mormon Church in Manchester and other interested scouts in South Windsor.

Donations of toys may be made by calling 644-1833.



ZBA Permits Auctions

SOUTH WINDSOR
Judy Kuehnel
Correspondent
644-1364

The South Windsor Zoning Board of Appeals (ZBA) has voted to allow the continuance of bi-weekly auctions in the Wapping Community Church Hall on Ellington Rd.

The application came before the ZBA after a complaint was filed against Charles Barker, 18 Farmstead Dr., South Windsor that he was holding the auctions, considered a commercial business, in a residential zone.

The ZBA, in executive session, voted unanimously to allow Barker a temporary and conditional permit for two years.

According to the ZBA the auc-

tions have been held in that area for some time and that they do not create a traffic problem.

Barker said that he was threatened with arrest if he continued the auctions.

MODEL RAILROADS
MILWAUKEE (UPD) — The model railroad business for both kids and adult hobbyists now is growing at the fastest pace in 30 years, says the magazine Model Railroader. Sales in 1973 were \$45 million and the number of serious model railroad hobbyists has grown by 40,000 this year from last year's 190,000. The article said the average serious basement scale-model rail tycoon spends \$27 a year on his hobby at some 1,700 stores.

and therefore applied to the ZBA for the conditional permit. Dog training classes and dance lessons are also held at the center, but were exempt from the "cease and desist" order issued Barker by the Planning and Zoning Commission, after the complaint was filed.

Barker, who pays \$100 per month to rent the hall for the auctions said he will resume the auctions Dec. 14.

open every nite 'til (except Saturdays)

candles all sizes

9

the miracle of main street downtown manchester

"we have every little thing!"

GREEN PLANT SALE

SAVE **30%**

ON EVERY GREEN PLANT IN STOCK. CASH AND CARRY

PLUS SPECIALS PRICED AT **50% OFF**

Flower Fashion

85 E. CENTER ST. TEL. 649-5268

OPEN DAILY 8-6 • Thurs.-Fri. till 9

lined alpine boots "conquer" cold feet.

savings "climb" to 44%.

Men... enjoy extra warmth in select group of handsome alpine boots... completely lined with plush acrylic pile.

Genuine natural-tone suede. Sturdy workshoe-style bottoms. Men's sizes 6 1/2-13. High savings to \$8 thru Sat-urday.

values to '18... **9.99**

at shoe-town.

Free parking. Bar/American. MasterCard.

MANCHESTER Pathmark Shopping Center
SOUTH WINDSOR WETHERSFIELD
85 E. CENTER ST. TEL. 649-5268



Diane Reynolds, Donna Christopher, and Kathy Mund wash windows at Rham School as part of their learning in a class community living. (Herald photo by Foote)

Rham Students Work To Beautify School

Nancy Foote

On Saturday morning a group of 9th grade students, members of Ronald Ouellette's class in Problems of Community Living, worked on a variety of projects to beautify Rham High School.

Students in the 5th period class made signs for the outside of the building identifying different areas of campus. Those in the 6th period class cleaned the boys' lavatory near their classroom and have agreed to maintain it for the rest of the year.

Boys and girls in the 7th period class worked on their own classroom, cleaning desks.

In 1982 the Ringling Brothers of McGregor, Iowa, formed the Classic and Comic Concert Company, the predecessor to the "Greatest Show on Earth" organized in 1984.

washing windows, washing and waxing the floors and dressing the room up with plants brought from home.

The students have planned three more Saturday work days.

Ouellette said that the project "reflects the whole mood of the student body this year. The students are taking a very active role in maintaining their community."

Other Projects

A major portion of the academic program in the Problems of Community Living classes is a study of the penal system. The students will take a field trip to the Criminal Justice Academy in Hadam. Also, a correctional officer and three inmates from the prison in Enfield will visit the classroom in January.

For 47 hours ten students participated in a mock prison situation. Later these students shared their insights with other members of the class.

The Best IN MEN'S SHOES!

• WRIGHT • DEXTER

• MUNN-BUSH

GLENNY'S MEN'S SHOP

789 Main St., Manchester
Open till 9 P.M.

Read Herald Ads

Appliances Major Cause Of Fires in the Home

WASHINGTON (UPI) — Appliances, including gas and electric stoves and television sets, are the leading cause of fires in the home, according to a government study.

In what was described as the first attempt to draw up a statistically accurate look at fire problems in the American household, the Consumer Product Safety Commission and the National Bureau of Standards estimated there were 5.5 million household and personal property fires in the country in the 12 months ending last April.

Of the 5.5 million, 4.5 million were in the home while the remainder were in vacation homes, cars, or other buildings on private property.

The report said appliance fires totaled 3.4 million. Of these, electric stoves, with 855,000 fires, were the leading cause followed by gas stoves with 300,000 and television sets with 100,000.

Nearly half of the appliance fires involved food and grease.

The report said the next most common source of household fires was electrical wiring followed by cigarettes and matches.

The survey said there were 326,000 injuries in the fires during the period involved with a property loss of \$1.5 billion.

Krause Florist & Greenhouses

LARGEST RETAIL GROWERS IN MANCHESTER

Call MANCHESTER 643-9559

211 HARTFORD ROAD, MANCHESTER

CASH & CARRY SPECIAL!

POM PONS \$1.59

All Colors! BUNCH

725 E. Middle Turnpike

FRANK'S Supermarkets

OUT FUDGE; QUALITY MEATS & PERSONAL SERVICE

Prices Effective Thru Dec. 14

OPEN MON. AND TUE. 9 A.M. to 9 P.M.
WED. THUR. SAT. 8 A.M. to 10 P.M.

ALL OUR BEEF IS USDA CHOICE "The Finest Sold Anywhere"

CHUCK STEAK 49¢

U.S.D.A. Choice First Cut

Double S&H Green Stamps Saturday Night 7-10 P.M.

GROUND CHUCK 99¢

USDA Choice Shoulder **ROAST BEEF \$1.39**

BONELESS ROLLED CHUCK ROAST \$1.09

CHUCK ROAST 89¢

CALIFORNIA SEMI-BONELESS

RIB END PORK ROAST 79¢

OUR OWN PURE PORK ITALIAN SAUSAGE \$1.09

HOT OR SWEET

U.S.D.A. CHOICE MEATS — PERSONAL SERVICE — S&H GREEN STAMPS

KELLOGG'S CORN FLAKES 59¢

18 OZ.

SWEET LIFE DIET SODA 4 \$1.00 FOR

28 OZ.

SWEET LIFE VEGETABLES Variety Selection 25¢

8 1/2 OZ.

WITH COUPON BELOW Maxwell House COFFEE 89¢

1 L.B. CAN

TOP QUALITY — VARIETY SELECTION — LOW PRICES

"Freshest Produce Sold"

Ripe, Yellow **BANANAS 12¢**

lb.

Ripe, California **STRAW-BERRIES 59¢**

pint

Idaho **RUSSETT POTATOES 49¢**

5 lbs.

New Crop **YELLOW ONIONS 9¢**

lb.

Imported **BOILED HAM 89¢**

1/2 lb.

89¢ WITH COUPON
SALADA TEA BAGS

30% OFF
FABRIC SOFTENER

89¢ WITH COUPON
MAXWELL HOUSE COFFEE

25% OFF
TOP CHOICE

5% OFF
CRISP & TENDER

15% OFF
OVEN CLEANER

SEE US FOR: FIREPLACE WOOD, & SALT MARSH HAY.

SEEN THE NEW GARDEN GROVE?



NOW ACCEPTING RESERVATIONS FOR ALL YOUR CATERING NEEDS!

SPECIALIZING IN

- Weddings
- Showers
- Testimonials
- Banquets
- Stags
- Company Parties

- Fine Food and Service (Dinners and Buffets)
- Wedding Consultant Can Visit You At Home
- Popular B.Y.O.B. Bar-Set Ups Available
- Spacious Dance Floor - Bring Own Band or Enjoy Our Juke Box
- Over 30 Years of Continuous Operation
- Member of Greater Hartford Chamber of Commerce
- Plenty of Free Parking

GARDEN GROVE CATERERS INC.

649-5313

Located in Manchester, Conn.
Take Keoney St. Exit off I-84 to Garden Grove Road

649-5314

Woodland GARDENS

Plants That Please!

* LET JOHN, LEON OR PHIL ZAPADKA HELP YOU *

168 WOODLAND ST. — OPEN DAILY TILL 8 — PHONE 643-8474

Christmas Tree Headquarters

Fresh Cut **TREES \$2.95** up

...from LIVE, Balled & Burlaped COLORADO BLUE SPRUCE 3 ft. and up ...from **\$12.95**

ARTIFICIAL TREES NOW AT REDUCED PRICES!

Decorate Your Home for Christmas & New Years!

Headquarters for: Wreaths, Garland, Roping, plus florist and decorating supplies, plastic, velvet, burlap ribbon, wire, wreath frames, styrofoam, oasis, picks, clay, ornaments, cones galore and much, much more!

Poinsettias "For Christmas Cheer and Color!"

CHOOSE FROM RED, WHITE or PINK POINSETTIAS...

"ONLY YOUR WOODLAND GARDENS CAN OFFER YOU A CHOICE OF THOUSANDS OF PLANTS; FROM THE GROWERS' GREENHOUSES TO YOU!"

Dried Material for Fall Arrangements!

Wheat — Oats — Thistle — Straw Flowers — Gourds

ORNAMENTAL CORN AND MUCH, MUCH MORE!

"We've Everything For The Do-It-Yourselfer!"

Help The Birds - Feed Them!

Don't Forget The Birds!

- SUNFLOWER SEED
- WILD BIRD FEED (includes mix)
- TIRISTLE SEED
- NIP SEED
- PEANUT HEARTS
- CRACKED CORN
- SWEET CANDIES
- BIRD HOUSES
- BIRD FEEDERS
- ELECTRIC BIRD WATER WARMERS
- TIRISTLE FEEDERS
- SUNFLOWER FEEDERS
- SQUIRREL FOOD FEEDERS
- BIRD BATHS

MCC To Graduate HELP Students

Manchester Community College will conduct its fifth annual graduation ceremony for students of Project HELP (Handicapped Earning and Living Projects) and its first awards ceremony for students of HELP Building Housekeeper Program, Tuesday at noon at MCC auditorium, 60 Bidwell St.



Roger B. Bagley

Project HELP is a community service program sponsored by the business careers division of Manchester Community College. It trains handicapped for employment in the food service industry. For the purposes of Project HELP, the term "handicapped" includes those who are physically handicapped, emotionally disturbed, educable mentally retarded, and those with various learning disabilities.

Third Wise Man Finds Star in His Heart

By H.D. QUICC
A star stood up in the East, and three kings of Orient gathered their riches and set out on a long journey westward. Their train of camels plodded slowly under the weight of great bags of treasures — gold vessels and bars, jeweled pieces, frankincense, and myrrh.

She'll Love Our Single Breasted Acrylic CARDIGAN BLAZER. Perfect with slacks, skirts, and dresses. Sizes S-M-L in Chinese Red and Navy. \$38. TWEED'S SPECIALITY SHOP. 773 Main St. Manchester. Open Thursday Nights 'til 9:00.

Erosion of Ozone Layer Called Global Peril

WASHINGTON (UPI) — A scientist told Congress Wednesday the earth appears to be "on the verge of a period of great peril to life on this globe" because of threats to the ozone layer from modern technology. Professor T. M. Donahue of the University of Michigan testified at the opening of two days of hearings into the question of whether from the gas used in aerosol sprays and as a coolant in refrigerators and air conditioning, has been eating away at the ozone layer near the top of the earth's atmosphere.

ELEGANT STREET LONDON (UPI) — Stores in Regent Street, London's most elegant shopping area will display goods and fashions of the Regency era during 1975. Street lamps in the 19th century style will add to the atmosphere, celebrating the 150th anniversary of the street's construction in 1825.

an afternoon party... And this sling is just the thing. Squared toe, center seam, perforated uppers, block heel, and slight platform; 5-10. 11.99. a fancy affair What could make you feel more festive than this glittering sequined platform sandal? Superbly comfortable and it makes you confidently taller; 5-10. 12.99. a bit more formal Then wear this foot-slimming sandal. Delicate open-toe and woven-look uppers, adjustable strap, block heel. Choose silver or gold; 5-10. 9.99. Every party is more fun in Tagway shoes. It's the party season! And you'll find all the newest shoes and sandals for every party and open house at Tagway. At prices that don't dampen your Christmas spirit. Tagway has thousands of shoes on open display. Here are just six women's party styles. the office party... And you want something sensible with style. Here it is: a glossy high heel with open toe, thick platform, adjustable back strap; 5-10. 10.99. a formal affair You've got the gown. And now you've got the shoe. A slip-on with glittering leaf-patterned sequined upper, rounded toe and moderate heel. A dance-all-night-and-never-get-tired shoe; 5-10. For everything you do... Tagway SHOES. MONEY BACK GUARANTEE. At Tagway any pair of shoes accompanied by the sales slip can be returned for refund or exchange within 60 days! OPEN EVERY DAY 10 to 10. K-Mart Shopping Mall 207 Spencer Street, Manchester.

Gift Alternatives Suggested To Help the World's Hungry

Gift cards have been made available by the Manchester Council on World Hunger as part of its alternative Christmas and Hanukkah giving program. The gift cards may be obtained at all member churches of the Manchester Area Conference of Churches (MACC), Temple Beth Shalom, Watkins Bros., Farr's, Lenox Pharmacy and Shady Glen at the Parkade.

Manchester Elks Conduct Annual Memorial Service

Manchester Lodge of Elks recently conducted its 21st annual Memorial Service at the Elks Home for the 15 lodge members who have died during the past year. Darrell L. Hovey, past exalted ruler of the lodge and chairman of the memorial service, said about 200 officers and members of the lodge, guests and friends and members of the families of the deceased members attended the annual service.

ABOUT TOWN. SWEET APPLE CIDER MADE FRESH ON THE FARM. No preservatives - Not pasteurized. A pure and natural product. An excellent substitute for soft drinks. • MACINTOSH • BALDWIN • CORTLAND • WINESAP. OPEN 7 DAYS A WEEK FERRANDO ORCHARD BIRCH MOUNTAIN ROAD, GLASTONBURY (3 miles beyond Vito's Restaurant).

Boiler Blast Kills Therapist. CAMBRIDGE, Mass. (UPI) — Charles Nordby, 35, of Westford, was fatally injured Wednesday when he was buried under tons of debris from a boiler explosion at the Harvard-Radcliffe Catholic Student Center. The council is also urging people to buy fewer and less expensive luxury items for seasonal giving.

Charge Accounts Invited Bank Charges Welcome. YOUTH CENTRE. Our Manchester Parkade Store Is Open Tonight 'til 9. With Every Sweater Get A Gift Certificate For A Free Monogram. Give Her A Pandora Sweater With A Gift Certificate For A FREE MONOGRAM. We'll include a gift certificate with your Pandora sweater. After Christmas bring it to any Youth Center store for a free monogram. Girls' Orion Cardigans & Pullovers 7.00 to 8.50. Preteen Orion Pullovers 9.00. Preteen Orion Cardigans 10.00. Teen & Jr. Orion Pullovers 12.00. Teen & Jr. Orion Cardigans 13.00. All our cardigan and pullovers in a super assortment of colors. Perfect for every girl and teenager on your Christmas list. And we'll monogram it free after Christmas in her choice of script or block letters.

JANUARY SALE SAVE AT ALL SIX Bernie's STORES When You Need Them Most! WITH THE COST OF ALMOST EVERYTHING SKYROCKETING, BERNIE'S BRINGS YOU LOWER PRICES NOW TO ROLL BACK THE COST OF GIFT BUYING! SAVE EVEN MORE WITH THESE Inflation Fighter COUPONS! VALUABLE COUPON GENERAL ELECTRIC SELF-CLEANING SPRAY STEAM & DRY IRON \$17.88. VALUABLE COUPON GENERAL ELECTRIC DELUXE TOASTER OVEN \$19.88. FREE \$50 WORTH OF 8-TRACK TAPES. FREE \$20 WORTH OF U.S.D.A. CHOICE BEEF. WESTHOUSE HUMIDIFIER \$39.95. FREE DELIVERY AND REMOVAL OF YOUR OLD APPLIANCE. NEW! Tech 800 Panasonic MULTI-BAND RADIO \$99.95. Panasonic 4 CHANNEL SOUND REFRIGERATOR-FREEZER \$268. STEREO UNIT WITH 8-TRACK PLAYER \$68. FREE IN-HOME SERVICE ON COLOR TV'S 18" and LARGER. PORTABLE COLOR TV \$428. BIG 15 CU. FT. STORES 525 lbs. FROST FREE FREEZER \$339. BERNIE'S DELUXE DELIVERY & SERVICE. YOU ALWAYS BUY BETTER AT BERNIE'S APPLIANCES. MANCHESTER PARKADE. Phone 643-9561.

SCOREBOARD

Table with NHL and NBA scores for various teams including Philadelphia, Vancouver, Chicago, St. Louis, and others.

Lanier Uses Size 19 Shoes To Stamp Out Loss Streak

NEW YORK (UPI) — Bob Lanier, the man with the size 19 shoes, stamped out the Washington Bullets' six-game losing streak Wednesday night.

College Basketball

Hoosiers Beating Top Ranked Clubs

NEW YORK (UPI) — Nobody can accuse Indiana's basketball team of taking the easy way out.

ABA Roundup

NEW YORK (UPI) — The last time the Spirits of St. Louis came to New York to play the Nets, Marvin Barnes took a powder.

ABA Roundup

Even With Barnes Nets Top Spirits

NEW YORK (UPI) — The last time the Spirits of St. Louis came to New York to play the Nets, Marvin Barnes took a powder.

Extra Man Hurts Flames, Leafs

NEW YORK (UPI) — The advantage in having the extra man proved a disadvantage for both the Atlanta Flames and Toronto Maple Leafs Wednesday night.

The Kings extended their unbeaten road streak to 11 games with their win over the Maple Leafs and also moved back into a tie with Montreal for first place in Division 3.



Hawks' Esposito Knocks Puck Away
Flames' Bennett (5) Follows its Flight

Carter Refused New Trial Bid

JERSEY CITY, N.J. (UPI) — Attorneys for former middleweight boxer Rubin "Hurricane" Carter and John Artis say they will appeal a judge's refusal to grant them a new trial on their eight-year-old murder convictions.



Black Hall-of-Fame Selections

Roy Campanella (right) and Roberto Clement, two baseball greats whose careers were ended by tragedy, and 12 others were named Wednesday as the second group of inductees to the Black Athletes Hall of Fame.

Money Top Glove Statistics Show

NEW YORK (UPI) — Don Money, the Milwaukee Brewers' 26-year-old third baseman, has the figures to prove he is one of the most underrated defensive players in baseball history.

Three Assured Semi Berth In Masters Tennis Tourney

MELBOURNE, Australia (UPI) — Title holder Ilie Nastase of Romania will meet Australian John Newcombe in Saturday's semifinal of the \$100,000 Commercial Union Grand Masters tennis tournament on the heavily grassed Kooyung courts.

out of tennis for three months. Vilas denied the reports but said that he had been suffering from severe pains in the stomach and would have a thorough medical checkup after his Davis Cup matches against Brazil in Sao Paulo.

FREE SAFETY CHECK



WARREN LeFORT — an employee of Manchester Tire for the last 10 years, Warren LeFort has over 37 years of experience in front end repair.

WE CHECK
• FRONT END • DISC BRAKES • SHOCKS • BALL JOINTS • WHEEL BEARINGS

• COMPLETE EXHAUST SYSTEMS AND OF COURSE YOUR TIRES FREE MOUNTING WITH PLYMOUTH OR NEW TIRES — Fast Courteous Service —

SPECIAL OF THE WEEK
775x15 GOODYEAR SUBURBANITE NYLON X NARROW WHITEWALLS
\$22.00 Plus \$2.15 F.E.T.

Open Mon., Tues., Wed. Fri. 8:00 - 5:30
Thurs. 8 to 8 Sat. 8 to 1

NICHOLS-MANCHESTER TIRE, INC.
295 BROAD ST. (Opposite Sear's Automotive)
Manchester Phone 643-1161

Pistons' Lanier Clogs Up Middle Forces Bullets' Chenier (45) to Pass Off

NEW YORK (UPI) — Nobody can accuse Indiana's basketball team of taking the easy way out.

Same Old Standing For Assumption 5

BOSTON (UPI) — Assumption College, last season's NCAA Division III representative from New England, has started the new basketball year where it left the old — right on top.

Trinity Cops Cage Contest

HARTFORD (UPI) — Trinity edged Amherst, 64-62 Wednesday night in a slow-starting game that saw the lead change hands four times in the last five minutes.

Central Wins

NEW BRITAIN (UPI) — Central Connecticut State staged a furious rally in the final three minutes to defeat Southern Connecticut, 79-73 Wednesday night.

Pistons' Lanier Clogs Up Middle Forces Bullets' Chenier (45) to Pass Off

NEW YORK (UPI) — Nobody can accuse Indiana's basketball team of taking the easy way out.

Jabbar Can Feel Walton's Plight

MILWAUKEE, Wis. (UPI) — Kareem Abdul-Jabbar knows what's going on inside Bill Walton because the 7-foot-2 Milwaukee Bucks center has been there himself.

Christmas Relays

BOSTON (UPI) — More than 20 college teams and a number of amateur track clubs will compete Sunday afternoon in the third annual Northeastern University Christmas relays at the school's Solomon Cage.

BASKETBALL

Behind the scoring output of Joe VanDusen (22), Ernie Moore (18) and Tim Conahay (17), Moriarty Brothers topped Cycle Gear, 87-74, in Senior League play last night at Tilling.

JUNIORS

Action in the Junior League at the East Side Rec last night saw the Braves top the Knicks, 56-53, and the Bears best the Saints, 51-46.

DON'T GET STUCK with high prices on winter tires!

Firestone Team & Country WINTER RETREADS

2 FOR \$28 FOR AS LOW AS \$28

2 FOR \$32 2 FOR \$36

BROWN TIRE SHOP
333 Main st. 646-3444 Manchester



SCIROCCO THE HOT ONE
Scirocco is hot new car from Volkswagen. You've seen it in the news with all the praise it has received.

Ted Trudon, Inc.
Tolland Tpke., Rt. 83 Talcottville

Packers' Devine Wants to Return

GREEN BAY, Wis. (UPI) — Dan Devine, head coach and general manager of the Green Bay Packers, has one year to go on his five-year contract, and he says he plans to honor the pact.

"I would just like to clear the air so that we can be thinking about football," Devine said Wednesday in response to talk his job might be in trouble.

"I signed a five-year contract through the 1975 season and much of my work Tuesday involved planning for 1975," he said. "I'm making plans for being here in '75. I'm quite happy and satisfied."

Talk of the possibility that Devine might be replaced was sparked when it was learned that the Packers executive committee would meet Sunday and make some sort of announcement next week.

Devine said there was no ill feeling between him and the committee.

"I think the impression has been created that there is some animosity between me and the executive committee, and that simply isn't true," Devine said. "There is none between me and the board or with any member of the board. Not in the least."

The committee announced Tuesday it would meet after Sunday's season finale with Atlanta, then announce its action Tuesday. The Packers need to beat the Falcons in order to finish with a 7-7 record.

Christmas Gifts May Be WFL Gear

BIRMINGHAM, Ala. (UPI) — Uniforms and equipment used by the Birmingham Americans in their first World Football League season may be found under many Christmas trees in Alabama this year.

An sporting goods store, a local firm which sold equipment to the WFL champions, Tuesday said the store was selling as souvenirs and Christmas gifts the jerseys, helmets, shoes and other paraphernalia used by the Americans this year.

The Hibbett official, who asked not to be identified, said public response to the sale was "good, very good" and many of the purchases "are parents buying them for Christmas presents."

Jefferson County sheriff's deputies seized the equipment shortly after the Americans won the championship World Bowl 22-21 over the Florida Blazers

BOWLING

REC - Randy Copeland 370, Jerry Smith 140-365, Ellie Fish 136.

CHURCH - Joe Saucier 252-534, Don Durand 220, Bernie Krutt 216-525, Joel Levy 209-526, Bob Samuelson 501, Bill McBride 504, Jim Dobson 526, Dick Niese 504, Al Semrau 504.

LAKS - Ernie Pepin 142-384, Bob Talmadge 158-409, Al Parker 140, Don Carpenter 143-375, Reggie Tomlinson 352, Tony Desimone 360, Dick Krol 363, Jack Talley 369, Bruce Fish 351, Ding Farr 367.

COMMERCIAL - Al Napolitano 154-405, John Bremser 145-149-395, Fred Oakes 140-138-382, Walt Lawrence 136, Ron Spohnheimer 140-382, Art Schenker 142-350, Carl Bajaucus 138-354, John Johnson 141, Andy Lamoureux 352, Nick Nicola 352, Dave Dynas 374, Lee Prior 357, Rob Nicola 360.

ST. JAMES - Julie Juliano 127, Marge Agostinelli 142.

WEDNESDAY WIVES - Joanne Korner 177-475, Lynne Topping 198-454, Carol Garrison 454, Joann Royal 463.

HOME ENGINEERS - Renee Gray 178, Edith Palmer 187-459, Donna Warner 467, Gerry Tucker 488.

KEYE - Clem Quey 207, Nick Cataldo 515, Mario Fratantoni 215-243-643, Real Audet 203-511, Real Breton 211-589, Ken Tomlinson 217-572, Norbert Audet 523, Ron Jensen 207, Leo Nelson 203-504, Terry Means 503, Ed Youkaskas 525, Bill Tomlinson 503, Bud Tomlinson 502, Mitt Kershaw 208-540, Al LaPlant 223-541, Vic Squadraro 202, John Martin 531, Bill Avery 203-535, Al Kuzmickas 201-357, Dave Pentman 501.

Proell Wins Alpine Race

CORTINA D'AMPEZZO, Italy (UPI) — Annemarie Moser-Proell zipped down the icy Caprotti Olympic course today to win her first downhill of the young World Cup ski season by half a second over America's Cindy Nelson and boost her overall Cup lead.

The Austrian superstar, going for her fifth straight World Cup title, covered the 2,350 meter course in 1:29.45 minutes to dash French hopes for an upset after Wednesday's time trials.

Miss Nelson, of Lutsen, Minn., was second in 1:29.92 and Wiltrud Drexel, also of Austria, came in third in 1:30.79.

France's Danielle Debernard, skiing from way back in 31st position, came in fourth in 1:30.81. It was the second straight week of success for the young new French star.

frame factory
A Division of Budget City, Seattle, Wash.
DO-IT-YOURSELF PICTURE FRAMING
We cut the matting and the glass, then help you with everything else. The right tools make the job easy—and you get professional results!
Also expert custom framing one day service
Fine Art Prints from the New York Geographic Society
LAPP PLAZA Route 83, Vernon
12 miles north of Vernon, Conn.
Phone 872-9022
HOURS: Tue-Wed Thurs-Sat 9:30-5:30
Friday 9:00-12:00 Noon to 9 closed Mon.

PLAZA DEPT. STORE
(We Have a Nation To Please)
Next to Frank's Supermarket
East Middle Tpk., Manchester
Open Every Night Until Christmas!!
• TOYS • GRAB BAG GIFTS
• TAGS • PARTY SUPPLIES
• CANDY CANES • HOUSEWARES
• GREETING CARDS • WRAPPING PAPER
• COLORING BOOKS • STOCKING STUFFERS
Need Something? Ask Plaza!

introducing...
tele cash
For Business People, Professionals, Individuals, Corporations, Churches
Manchester's newest banking idea from Manchester's oldest savings institution.
TELE-CASH is a savings account which puts your idle cash to work earning top interest. Your funds remain readily available for use—just a phone call away.
You write a check for your excess cash and deposit it in your Heritage TELE-CASH account.
Your funds earn 5.25% annual rate compounded daily and continuously yielding an effective rate of 5.47% a year. Your money earns everyday interest from day of deposit to day of withdrawal, credited monthly. Your money can earn this much.
Deposit 5 Days 12 Days 23 Days 49 Days 80 Days 180 Days
\$ 5,000 \$ 3.37 \$ 8.08 \$ 15.49 \$ 33.06 \$ 54.07 \$ 122.40
10,000 6.74 16.17 30.98 66.12 108.14 244.80
20,000 13.47 32.34 61.96 132.24 216.28 489.60
50,000 33.68 80.85 154.90 330.60 540.70 1,224.00
100,000 67.36 161.67 309.80 661.20 1,081.40 2,448.00
Amounts may vary slightly by monthly computer calculation.
PHONE US
We'll be happy to discuss details at your office or at ours.
Ray Juleson
Vice President, Operations
Heritage Savings & Loan Association • Since 1891
formerly Manchester Savings and Loan Association
Main Office: 1007 Main St., Manchester 648-4568 • K-Mart Office: Spencer St., Manchester 648-3007
Conventry Office: Rt. 31, Conventry 742-7321

CHRISTMAS AGWAY! Clean Sweep Sale!
ONCE-A-YEAR SAVINGS! REDUCED TO CLEAR! QUANTITIES LIMITED! HURRY!
COMPLETE TRIM-A-TREE SELECTION NOW **50% OFF** Prices Marked
ALL TOYS IN STOCK **20% OFF** prices marked
ALL STYLES OF BROADMYER RADIO'S **Half Price** starting at \$3.00
WINTER CLOTHING CLEARANCE **25% OFF** on all jackets - hats - winter boots
STANLEY TOOL KIT only 20 reg. \$11.49 NOW **9.99**
BLACK & DECKER DRILL BITS assorted REG. \$7.99 NOW **4.00**
BIRD FEEDER starter kit ONLY **5.95**
BIRD FEEDER BIRD SEED BOOK REG. \$1.89 NOW **90¢**
WATERLESS COOKWARE 7 pc. \$59.95 value REG. 40.00 NOW **15.25**
BATTERIES Twin pack of "C" or "D" cell batteries available. Stock up and save! (61-2401, 2) Pack **30¢** Reg 60¢ Save 30¢
2 DRAW STEEL FILING CABINETS for business or home reg. \$24.95 NOW **15.25**
MODERN STYLE DESK WITH 2 DRAWLS Now Half Price reg. \$31.95 **15.95**
VELEX LINED JERSEY GLOVES for work or dress NOW **1.99** reg. \$1.99 save 50¢
AGWAY WINDSHIELD WASHER REG. \$1.79 NOW **1.29**
ALL SIZES OF from stock WEST BEND HUMIDIFIERS NOW **25%**
AGWAY, Inc.
540 NEW STATE ROAD, Buckland 643-5123
STORE HOURS: Mon., Tues., Wed., Thurs., Fri. 9:00-5:30 Sat. 9:00-4:30 Sun. 10:00-4:30

introducing... tele cash
For Business People, Professionals, Individuals, Corporations, Churches
Manchester's newest banking idea from Manchester's oldest savings institution.
TELE-CASH is a savings account which puts your idle cash to work earning top interest. Your funds remain readily available for use—just a phone call away.
You write a check for your excess cash and deposit it in your Heritage TELE-CASH account.
Your funds earn 5.25% annual rate compounded daily and continuously yielding an effective rate of 5.47% a year. Your money earns everyday interest from day of deposit to day of withdrawal, credited monthly. Your money can earn this much.
Deposit 5 Days 12 Days 23 Days 49 Days 80 Days 180 Days
\$ 5,000 \$ 3.37 \$ 8.08 \$ 15.49 \$ 33.06 \$ 54.07 \$ 122.40
10,000 6.74 16.17 30.98 66.12 108.14 244.80
20,000 13.47 32.34 61.96 132.24 216.28 489.60
50,000 33.68 80.85 154.90 330.60 540.70 1,224.00
100,000 67.36 161.67 309.80 661.20 1,081.40 2,448.00
Amounts may vary slightly by monthly computer calculation.
PHONE US
We'll be happy to discuss details at your office or at ours.
Ray Juleson
Vice President, Operations
Heritage Savings & Loan Association • Since 1891
formerly Manchester Savings and Loan Association
Main Office: 1007 Main St., Manchester 648-4568 • K-Mart Office: Spencer St., Manchester 648-3007
Conventry Office: Rt. 31, Conventry 742-7321

School Principals Submit Proposed Program Changes

TOLLAND

Vivian Keneson, School principals attended Wednesday's Board of Education meeting to present program changes contemplated for the 1975-76 school year, pre-empted that changes must fit within their present budgets.

The preliminary proposal would continue with the concept used partly at Parker in the K-1, 1-2, and K-1 programs, and at Hicks with Grades 3 and 4 completely intermingled.

Lincoln said he has a teacher and knows already of about 12 students and parents who would be willing to participate in the pilot program.

Lincoln also proposed elimination of the transitional, or half, grades, mainstreaming those students behind academically, emotionally, or socially, while instituting resource rooms where children would receive two hours of reading and math daily.

Lincoln said he feels it is wrong to put youngsters who are behind with other youngsters who are ahead.

Winn's other program proposals include further development of resource rooms and materials, where a teacher in charge would have activities for students continually, and a "beefed up" in-service IGE training program for teachers.

Vene Harding, Tolland Middle School principal, presented proposals including the addition of girls' fall field hockey; a physical education remedial program geared to those with problems such as obesity or understrength; and replacement of two aides with a full or part-time teacher.

Roy Nierendorf, Tolland High School principal, presented a proposed program of quality point system to reflect more accurately the relative academic performance, allow teachers

more flexibility in grading for lower ability students, and encourage college-bound students to take more appropriate challenging courses.

Other proposed new programs include: Personal typing to develop correct basic skills for manuscripts, reports, etc., which would replace Typing I; industrial drawing (drafting); introduction of voices and II classes; Madrigal Singers; girls varsity field hockey; and a mini reading course for underachievers.

A full- or half-time cooperative work experience person is also sought at the high school, if state funds are available, as well as changes within the foreign language and science departments.

Washington (UPI) — A bill passed by the Senate extending the U.S. fishery management zone to 200 nautical miles will help preserve stocks of fish from foreign fleets, according to Sen. Lowell P. Weicker, R-Conn.

"The fish along our coastline are being severely depleted by the presence of foreign fishing efforts," said Weicker, a chief sponsor of the measure. "By setting management authority at 200 miles, the U.S. will be able to control the massive

foreign fishing effort that is now taking place."

Weicker Wednesday called the measure an "emergency action" needed until international agreement can be reached.

The Senate also adopted an amendment sponsored by Weicker authorizing the Commerce Department to compensate U.S. fishermen whose vessels or gear are damaged or destroyed by foreign fleets within the U.S. continental shelf.

The Herald

Cotter Gets Post

WASHINGTON (UPI) — Rep. William R. Cotter, D-Conn., has been named to serve on the powerful House Ways and Means Committee, which prepares all tax laws.

The House Democratic Steering and Policy Committee Wednesday proposed Cotter and 18 other Democrats to serve on the committee, which is being expanded.

When two is company, quality counts.

Flawless taste, chronometer precision and uncommon durability mark this Rolex pair. Hers: Lady-Date with 14kt. gold bezel, 26-jewel self-winding movement. His: 75th Anniversary Datejust with 14kt. gold bezel. Both Oyster cases are guaranteed pressure-proof down to 165 feet.

Michael's 75 Our 75th Anniversary Year As Leading Jewelers & Silversmiths

958 MAIN STREET, DOWNTOWN MANCHESTER Hartford • West Farms Mall

CHRISTMAS WREATHS
FRESH AND ARTIFICIAL
• CEMETERY BASKETS
HOLLY & MISTLETOE
Flower Fashion
85 E. CENTER ST.
TEL. 649-5268
OPEN DAILY 8-6 • THURS.-FRI. 11 9 P.M.

K-mart gives satisfaction always
THURS., FRI., SAT.
Living FOLIAGE PLANTS add charm to your home
MAKE K-MART YOUR CHRISTMAS HEADQUARTERS
HANGING BASKETS \$4.47
Assorted varieties including wandering jew, inch plants, Swedish Ivy. Regular 7.97
HANGING BASKETS \$6.37
Regular 9.97
YOUR CHOICE NOW ONLY 4" Pots **88¢** Regular 1.27
TEMPERATURE C — COOL — 40-50° F. at night, rising to 55° or 60° on a sunny day.
I — INTERMEDIATE — 50-55° F. at night, rising to 70° on a sunny day.
S — WARM — 62-65° F. at night, 80° to 85° in daylight.
SOIL H — SOIL RICH IN HUMUS or leafmold, peatmoss, and some loam.
L — LOAM or rich garden soil with rotted manure, humus added.
WATERING D — DRY SIDE: Drench thoroughly then allow to dry moderately between waterings.
M — MOIST: Evenly moist, but not constantly wet.
W — WET: Never allow to dry out, but not left standing in water.
LIGHT F — FILTERED or DIFFUSED LIGHT: Prefers 1000-3000 ft. candles for average day-length, but tolerates 100 ft. candles daylength.
N — NO SUN or SHADY: 50-800 ft. candles, for normal daylength.
B — BRIGHT LIGHT

1
2
D
E
C
1
2

Manchester — 239 Spencer St.

Council Bars Civil Action To Fight Live Sex Shows

VERNON BARBARA RICHMOND Having been advised by Town Attorney...

the office of the deputy chief state's attorney. Local officials were told that a civil suit...

now at Capitol Tire Firestone Town & Country 4-ply Whitewalls Rayon cord WINTER TIRES

Someone Has Wrong Coat A member of Manchester Chapter, American Association of Retired Persons...

Table with columns: SIZE, CLOSEOUT PRICE, F.E.T. Rows include 678-14, 678-15, 678-16, 678-17, 678-18.

Weicker Bill Would Change IRS Audits WASHINGTON (UPI) — Sen. Lowell P. Weicker, R-Conn., says he plans to introduce a bill...

Firestone Town & Country WINTER RETREADS FOR AS LOW AS 2 FOR \$28

FIRE CALLS

WEDNESDAY, 3:34 p.m. — False alarm at Box 36, corner of Church and Laurel Sts. (Town) Wednesday, 4:16 p.m. — Oven fire at 9 Avon St. (Town)

PHILIPPINES VISITORS MANILA (UPI) — A total of 314,229 foreign travelers visited the Philippines from January to October this year...

PHILIPPINES VISITORS MANILA (UPI) — A total of 314,229 foreign travelers visited the Philippines from January to October this year...

LANE "EVERYTHING MUSICAL" MUSIC CENTER Drums, Amplifiers, Guitars, Band Instruments

Radio Shack SMART SANTAS' ANTI-INFLATION SALE! STORES NOW OPEN LATE NIGHTS TILL CHRISTMAS

SAVE \$20 10 DIGITS! 4-KEY MEMORY! RADIO SHACK CALCULATOR Reg. 99.95 \$79.95

SAVE \$10 GIVE A REALISTIC® 2-WAY RADIO FOR USE IN YOUR AUTOMOBILE! Reg. 59.95 \$49.95

OUR OWN FAMOUS MICRONTE® BRAND DIGITAL ELECTRONIC WATCH Reg. \$19.95 \$11.95

5 MORE EXCITING AND SENSIBLE RADIO SHACK GIFTS AT REDUCED PRICES!

388 MIDDLE TURNPIKE, WEST MANCHESTER PARKADE 649-1806

9,830 Attend Schools

Manchester's school enrollment as of this week is 177 less than it was this time last year...

ENERGY WORLD By JERRY WILSON TULSA, OKLA. (UPI) — The giants of the world...

By JERRY WILSON TULSA, OKLA. (UPI) — The giants of the world play only minor roles in the discovery and recovery of America's domestic oil...

ABOUT TOWN Levine & Levine Co., Inc. SALE ON SPORTSWEAR MANY FAMOUS BRANDS SAVE UP TO 1/3 OFF

open every nite 'til (except Saturdays) sequins and trims FAIRWAY 'See how every little thing!'

EXTRA! FROM THE NORTH POLE!! SANTA CLAUS WILL ARRIVE AT THE CALDOR SHOPPING CENTER (BURR CORNERS) BY FIRE ENGINE SATURDAY, DEC. 14 — 12 NOON

Look for the Friendly Gift Certificate Headquarters at the take-out section of your friendly neighborhood Friendly...

Harvey's HOLIDAY SPECIALS "Old Colony" Shetland Sweaters \$8.88

SHIRTS: Soft and Supple LUSCIOUS SOLID COLORS • 100% POLYESTER \$8.88

BANLON PAJAMA SETS • ICE CREAM PASTEL COLORS • PERFECT FOR THE HOLIDAYS \$32.00

SLACKS From a Famous Maker • SOLIDS, PLAIDS & CHECKS • POLYESTER - MACHINE WASHABLE \$12.22

Wishing Well Cards and Gifts BRR CORNERS SHOPPING CENTER

Levine & Levine Co., Inc. SALE ON SPORTSWEAR MANY FAMOUS BRANDS SAVE UP TO 1/3 OFF

ORIENTAL HOUSE RESTAURANT Specializing in JAPANESE and KOREAN FOOD LUNCHEON SPECIALS SERVED DAILY

FAMOUS BRAND SHOES Buy One Pair and Get 2nd Pair of Men's or Women's or Children's Shoes 1/2 PRICE

Golden Charm Coiffures WIN A BEAUTIFUL CERAMIC CHRISTMAS TREE

BANLON PAJAMA SETS • ICE CREAM PASTEL COLORS • PERFECT FOR THE HOLIDAYS \$32.00

SLACKS From a Famous Maker • SOLIDS, PLAIDS & CHECKS • POLYESTER - MACHINE WASHABLE \$12.22

COUPON DEPOSIT AT GOLDEN CHARM COIFFURES

Borrowing for Projects Okayed

By SOL R. COHEN

The Manchester Board of Directors Tuesday night authorized town officials to borrow \$5,000,000 in short term notes - in anticipation of bond issues for three programs approved Nov. 5 by the voters.

The programs are: \$1.4 million for a Regional Occupational Training Center, \$2 million for improvements to townwide storm-drainage problems, and \$2.25 for purchasing the privately owned Manchester Water Co.

Town Manager Robert Weiss has acknowledged the borrowed funds won't be needed for some time (the storm drainage work, for example, will take up to three years to complete).

He said the borrowed funds will be deposited in bank certificates, in order to take advantage of high investment returns. Although it isn't an accepted practice for municipalities to borrow for profit reasons alone, it's not an unusual practice, Weiss explained.

In other financial actions Tuesday night, the board allocated \$5,000 from revenue-sharing funds for a 15 kilowatt generator for the highway department garage. The generator will be

purchase through bids. Allocated \$5,000 from revenue-sharing funds for various maintenance improvements at town facilities, as required under a federal Occupational Safety and Health Act (OSHA).

Appropriated \$4,704 for three projects in the Vocational Education Program - to be financed by an equal state grant.

Appropriated \$6,254 for a personal intere - to be financed by an equal grant under the Inter-governmental Personnel Act.

The board agreed to place on its agenda for January a request from the Community Renewal Team of Hartford for a \$10,000 contribution - to help eliminate a CRT deficit.

The Community Renewal Team is the anti-poverty agency for the 29-town Hartford area. It administers funds from the federal Department of Labor, the Department of Health, Education and Welfare (HEW), the state Department of Community Development, and the state Commission on the Aging, for example. Its efforts are matching - 80 per cent federal and 20 per cent area.

Appearing before the directors Tuesday night were three CRT officials. The directors were shown a 15-minute slide and sound presentation, explaining CRT programs.

CRT head James G. Harris Jr. then explained some of the programs. Manchester's involvement in them and the financial position CRT finds itself in.

He said, since 1968, CRT has funneled about \$480,000 to Manchester, the bulk of it (about \$400,000) for Head Start.

Harris said the town may designate how its funds may be spent, if it contributes to CRT.

He said the 1975 allocation to Manchester for all programs is to be about \$103,000 - for Head Start, summer youth program and nutrition for the elderly program.

Funds to Manchester this year for the nutrition program supplied 65 meals a day for 265 days, Harris said.

Harris said the town may designate how its funds may be spent, if it contributes to CRT.

He said the 1975 allocation to Manchester for all programs is to be about \$103,000 - for Head Start, summer youth program and nutrition for the elderly program.

Funds to Manchester this year for the nutrition program supplied 65 meals a day for 265 days, Harris said.

Harris said the town may designate how its funds may be spent, if it contributes to CRT.

He said the 1975 allocation to Manchester for all programs is to be about \$103,000 - for Head Start, summer youth program and nutrition for the elderly program.

Funds to Manchester this year for the nutrition program supplied 65 meals a day for 265 days, Harris said.

Harris said the town may designate how its funds may be spent, if it contributes to CRT.

He said the 1975 allocation to Manchester for all programs is to be about \$103,000 - for Head Start, summer youth program and nutrition for the elderly program.

Funds to Manchester this year for the nutrition program supplied 65 meals a day for 265 days, Harris said.

Harris said the town may designate how its funds may be spent, if it contributes to CRT.

He said the 1975 allocation to Manchester for all programs is to be about \$103,000 - for Head Start, summer youth program and nutrition for the elderly program.

Funds to Manchester this year for the nutrition program supplied 65 meals a day for 265 days, Harris said.

Harris said the town may designate how its funds may be spent, if it contributes to CRT.

He said the 1975 allocation to Manchester for all programs is to be about \$103,000 - for Head Start, summer youth program and nutrition for the elderly program.

Funds to Manchester this year for the nutrition program supplied 65 meals a day for 265 days, Harris said.

Harris said the town may designate how its funds may be spent, if it contributes to CRT.

He said the 1975 allocation to Manchester for all programs is to be about \$103,000 - for Head Start, summer youth program and nutrition for the elderly program.

Funds to Manchester this year for the nutrition program supplied 65 meals a day for 265 days, Harris said.

Harris said the town may designate how its funds may be spent, if it contributes to CRT.

He said the 1975 allocation to Manchester for all programs is to be about \$103,000 - for Head Start, summer youth program and nutrition for the elderly program.

Funds to Manchester this year for the nutrition program supplied 65 meals a day for 265 days, Harris said.

AGWAY

Hotpoint Microwave Oven

REG 279⁹⁵
NOW ONLY **\$239⁹⁵**

With Brown and Serve Dish

REG \$399⁹⁵
NOW ONLY **\$288⁸⁸**

AGWAY Inc.

ABOUT TOWN

The Manchester State Armory, 330 Main St. Membership in the squadron is open to all young people from Grade 7 through high school. More information may be obtained by calling 646-6344 or 875-8870.

The Manchester State Armory, 330 Main St. Membership in the squadron is open to all young people from Grade 7 through high school. More information may be obtained by calling 646-6344 or 875-8870.

The Manchester State Armory, 330 Main St. Membership in the squadron is open to all young people from Grade 7 through high school. More information may be obtained by calling 646-6344 or 875-8870.

a "sackful" of gift ideas!

HARRISON'S STATIONERS Has It All!

849 Main St. Manchester, Conn. Since 1945

A & B SPORT SHOP
Fishing, Camping, Hunting, General Sports

SLEDS and TOBOGGANS
Quality Merchandise at Reasonable Prices
Gift Certificates for Christmas

1000 HARTFORD TPKE. VERNON • 872-8052

REDKEN GIFT PAK. GIFT CERTIFICATES

- Body Perms
- Manicures
- Eye Brow Waxing
- Blow Cuts

FULL SERVICE SALON
Gloria's Beauty Spa
872-8531

42 Union St., Rockville Opposite Hospital

This Christmas Give That Special Person A

MARLOW'S

Every Thing Since 1911

DOWNTOWN MAIN STREET, MANCHESTER • 646-2121 1911

NORTHLAND BLIZZARD SALOMON MARKER TYROIA

ADULT SKI PKG. \$109⁰⁰

- AUSTRIA or YAMAHA SKIS
- TYROLIA BINDINGS
- BARRECRATER POLES
- HI BACK BOOTS

Other Skis - Boots - Clothing at 30 to 50% OFF

RIZZO SKI SHOP
VERNON CIRCLE, VERNON 647-9420

PANASONIC

GIFT HEADQUARTERS
RADIOS - TAPE RECORDERS
COMPONENT SYSTEMS

Potterton's
130 CENTER ST. MANCHESTER 646-5537

THE "INNE" PLACE

FOR YOUR PET
Let Us Bathe and/or Groom Your Dog

Leave Him. We'll Love Him for the Day

While you Shop.
NOONDAY SNACK • BACKGROUND MUSIC
OPEN 8 A.M. - 5 P.M.
For Reservations Please Call 646-5071

CANINE HOLIDAY INNE
200 Sheldon Road, Manchester, Conn.

NICHOLS MANCHESTER TIRE, INC.

295 Broad Street
Manchester, Conn.

Hours: Mon., Tues., Wed., Fri. 8:00 to 5:30
Thursday 8:00-8:00 - Sat. 8-1

GOOD YEAR TIRES **ARCO**

CARTER CHEVROLET has...
Your Key to A Happy Holiday

For A Practical Gift Think Of Us For Tires
SHOCKS • FRONT END • DISC BRAKES
BALL JOINTS • COMPLETE EXHAUST
AND OF COURSE OUR TIRES AND FREE MOUNTING

The Finest In HOLIDAY CATERING

PICK UP or DELIVERED BUFFETS

IN READY TO SERVE CONTAINERS
Also Catered Dinners & Buffets at Our Attractive Hall or A Place of Your Choice!

GARDEN GROVE CATERERS, INC.
649-5313 or 649-5314

BE A SMART SANTA

GIVE A **KitchenAid** Dishwasher

B. D. PEARL AND SON
649 Main St., Manchester
Tel. 643-2171

WILTON'S Gift Shop

304 Main St. in Downtown Manchester

Headquarters for COLLECTOR PLATES • BOTTLES • ZOO ANIMALS • HUMMEL FIGURINES

You use it to yourself to visit this fascinating shop!

Quervo 1800

\$10⁵⁵ FIFTH

HARVEST VINEYARD
PACKAGE STORE MANCHESTER PARKADE

THE ALPINE HAUS SKI SHOP

of VERNON
200 Post St. Plaza Vernon

OPEN EVERY NITE TIL 9 P.M.
SAT. TIL 5:30
For All Your Skiing Needs
Tel. 872-8447

Christmas Begins at Adam's Apple

ONLY 11 SHOPPING DAYS TIL CHRISTMAS

Adam's Apple
MANCHESTER PARKADE - MANCHESTER

GIFT GUIDE

CHECK THE HERALD CHRISTMAS GIFT GUIDE DAILY UNTIL DECEMBER 23rd!

BRAY'S JEWELRY STORE

177 Main St., Manchester

FREE LOTTERY TICKET with \$10 or more purchased

FOR CHRISTMAS WE SUGGEST:

- CHARMS • PINNACLES
- WATCHES • CLOCKS
- BRACELETS
- GLASSWARE
- DIAMOND ENGAGEMENT RINGS and WEDDING BANDS

RENT-A-CAR

319 Main Street
Manchester

DILLON LEASING CORPORATION
Complete Leasing and Rental Service

Pinto - \$49 per week plus mileage

Gift SPECIAL!

739 MINI-CALCULATOR
Memor., 8 digit capacity, AC/DC with batteries and adapter. Not as illustrated. Regular 79.95

\$63⁰⁰

239 Spencer Street • Manchester

Watch for our opening next week!

Regal Mufflers
of Manchester, Inc.

Corner of Center & Broad Streets

Christmas Begins at Adam's Apple

ONLY 11 SHOPPING DAYS TIL CHRISTMAS

Adam's Apple
MANCHESTER PARKADE - MANCHESTER

TENNIS FORUM MEMBERSHIP

GIVE A CHRISTMAS GIFT FOR THE WHOLE FAMILY

TENNIS FORUM FAMILY MEMBERSHIP
ONLY \$55.00
INDIVIDUAL ONLY \$38.50

Phone 875-7094
872-8400

LEWYT VACUUM CLEANER

Big Wheels • With Attachments

\$1988

FARR'S 2 MAIN ST. 643-7111

OPEN SUNDAY

10 A.M. to 7 P.M.
BICYCLES • TOYS
SPORTING GOODS
CAMPING EQUIPMENT

Phone 643-2145

Christmas Shopping Hours

MANCHESTER
Mon.-Fri. 9:30 - 9
Sat. 9:30 - 5:30
through December 23rd

VERNON
Mon.-Sat. 10 - 9
through December 23rd

REGAL MEN'S SHOP
MANCHESTER THE COMPLETE MEN'S STORE
VERNON THE CITY PLAZA

FRANK'S Supermarkets

DOUBLE S&H GREEN STAMPS EVERY WEDNESDAY!

Santa says...
For Your Holiday Parties, Try a "DELI PLATTER" from FRANK'S
ANY SIZE PLATTER - ANY VARIETY OF MEATS - MADE TO ORDER

ITALIAN PLATTER \$10⁹⁹ Serves 6-8	BEEF PLATTER \$17⁹⁹ Serves 10-12
<ul style="list-style-type: none"> 8 OZ. PROSCIUTTI 8 OZ. HAM CAPICOLA 8 OZ. GENOA SALAMI 8 OZ. SLICED PROVOLONE 16 OZ. DILL PICKLES (SPRARS) 2 LBS. POTATO SALAD 2 LBS. COLE SLAW 2 LBS. ITALIAN BREAD 	<ul style="list-style-type: none"> 1 LB. ROAST BEEF 1 LB. COOKED CORNED BEEF 1 LB. ALL BEEF SALAMI 1 LB. WHITE MEAT TURKEY ROLL 16 OZ. DILL PICKLES (SPRARS) 2 LBS. POTATO SALAD 2 LBS. COLE SLAW 1 JAR MUSTARD 2 LBS. SLICED RYE
EUROPEAN PLATTER \$17⁹⁹ Serves 10-12	International PLATTER \$14⁹⁹ Serves 10-12
<ul style="list-style-type: none"> 1 LB. IMPORTED BOILED HAM 1 LB. ITALIAN LOAF 1 LB. POLISH LOAF 1 LB. PASTRAMI 1 LB. HARD SALAMI 1 LB. OLIVE SALAMI 2 LBS. POTATO SALAD 2 LBS. COLE SLAW 16 OZ. DILL PICKLES (SPRARS) 2 LBS. RYE BREAD 1 JAR MUSTARD 	<ul style="list-style-type: none"> 1 LB. FRENCH LOAF 1 LB. ITALIAN LOAF 1 LB. POLISH LOAF 1 LB. GERMAN BOLOGNA 1 LB. SLICED PROVOLONE 16 OZ. DILL PICKLES (SPRARS) 2 LBS. GERMAN POTATO SALAD 2 LBS. COLE SLAW 2 LBS. RYE BREAD 1 JAR MUSTARD

TRADE YOUR TV

1974 TELEVISION BLUE BOOK
OFFICIAL TRADE-IN GUIDE

★ BRING IN YOUR MODEL NUMBERS ★ ALL TVS ARE LISTED

WE WILL GIVE YOU EXACTLY WHAT THIS BLUE BOOK SAYS YOUR SET IS WORTH IN TRADE.

YOU NEED TO SAVE DOLLARS... WE NEED USED TVS... YOUR SET WILL NEVER BE WORTH MORE... SO LET'S TRADE NOW!

100% SOLID STATE \$1198 LESS YOUR TRADE	4 YEAR GUARANTEE 100% PARTS	100% SOLID STATE \$548 LESS YOUR TRADE
100% SOLID STATE \$898 LESS YOUR TRADE	4 YEAR GUARANTEE 100% PICTURE TUBE	100% SOLID STATE \$648 LESS YOUR TRADE

You Will Save \$100 to \$200
IN OWNING & OPERATING A CURTIS MATHES

Turnpike
MANCHESTER
FREE DELIVERY
FREE INSTALLATION
FREE SERVICE

OPEN WED., THUR., FRI.
UNTIL 9:00 P.M.
SATURDAY UNTIL 5:00 P.M.
NO MONEY DOWN!

1
2
DEC
1
2



David Robbins photo

Jani Brenn as "Anne Frank" is surrounded by Nazis, Anderson Matthews, left, Gale McNeely and Sharita Hunt, in the Hartford Stage Touring Theatre Company's production of "Annelies Marie Frank: Witness," which will be presented Tuesday at Temple Beth Shalom.

Temple Sisterhood To See Stage Company Documentary

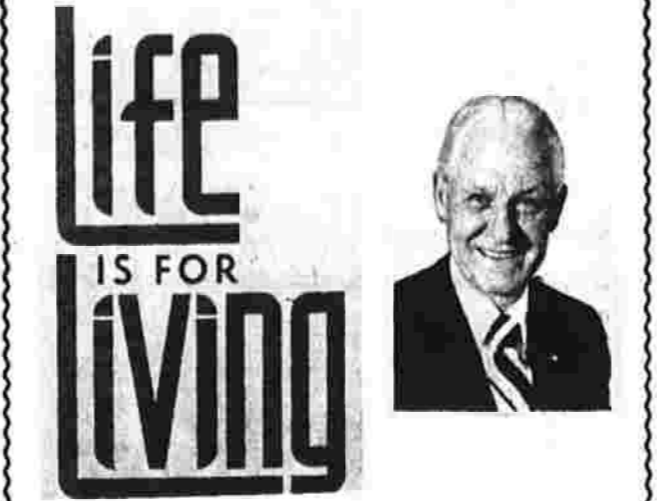
The Hartford Stage Touring Theatre Company will present its new documentary drama, "Annelies Marie Frank: Witness," Tuesday at 7:45 p.m., at Temple Beth Shalom. The play will be featured at the annual joint meeting of the Temple's Sisterhood, Hadassah, Mr. and Mrs. Club and B'nai B'rith.

Washington Window Adventures of Super K

By R.H. GROWLD
UPI Senior Editor
WASHINGTON (UPI)—This is a winter of discontent for Secretary of State Henry A. Kissinger. He is far from 97-pound weakling status, but his sag at man image has faded at home and abroad. In Congress, such critics as Sen. Henry M. Jackson, D-Wash., may say such Kissinger doings as East-West detente and Washington-Moscow deals to limit nuclear weapons. In the Washington press corps, debate over Kissinger tends to run to whether he will be out of office next year or when. But the discontent is nothing unless one of two men act. President Ford and Kissinger himself are the only critics the secretary of state need have pause over. Only Ford or the man himself is powerful enough now to end the career of the spectacular secretary. Is Ford likely to dump Kissinger? It is taken for granted the President is tinkering with cabinet carpentry and that at least half a dozen of those Cabinet Room leather chairs bearing the dates of entry of each member will be switched before the cherry blossoms bloom again around the Tidal Basin. But the chair bearing the small brass plaque "Secretary of State, Sept. 21, 1973" seems certain to be around as long as the one saying "The President, Aug. 9, 1974." Ford has pledged publicly his allegiance to the genius and the need of Kissinger. The pluses claimed by Ford's four-month-old administration—for example, the "Vietnam ceasefire limitation pact with the Russians—largely stem from the secretary of state. Kissinger is not one to suffer fools. Even in higher office. During the latter months of

The Shoe String

38 Oak St. in Downtown Manchester
Ample Parking Across The Street
PHONE 643-7885



Written by FRED R. EDGAR
Former minister of So. Methodist Church
Hardcover \$3.95 Paperback \$1.95
Also orders taken for autographed copies
MONDAY thru SATURDAY 10 to 5:30
OPEN THURSDAY NITES 'til 9

Quality MEN'S SHOES!
• WRIGHT • DEXTER
• NUNN-BUSH
• GLENNEY'S
MEN'S SHOP
789 Main St., Manchester
Open 'til 9 P.M.

Read Herald Ads

Weiss Favors Commercial Use of Grant Building

The vacant Jaffe & Podrove Building at 811-821 Main St., which is among top priorities for spending federal block grants in Manchester, presents a real challenge, Town Manager Robert Weiss told the Mayor's Downtown Action Committee this morning. But the best use of the property may still be commercial.

Town Seeks Its Role In Use of Cable TV

Cable television—expected to become operational in Manchester within a few months—provides a great potential for municipal government to communicate with citizens, say town officials trying to figure out what to do with that potential. If cable television reaches 70 per cent on Manchester homes in three years—as Greater Hartford CATV, the operator, expects—it will be a great medium to disseminate information, according to Town Manager Robert Weiss and his assistant, Charles McCarthy. Federal and state regulation of cable TV operation requires the operator to provide channels for locally-originated programming. The basic questions concerning what goes on those reserved channels, and who will pay for it, are the reason for formation of a town committee. "The cable industry is a new and largely unprecedented phenomenon," Weiss said. "The potentialities and problems involved in positive use of the local channels are vast and largely uncharted. There is a tremendous need for a local agency charged with the task of familiarizing itself with the cable industry and ultimately providing direction and coordination of local programming efforts," Weiss said. So an internal town committee—consisting of education, library, and human services officials—has been gathering information and trying to provide input for a state-

The building, which has been vacant since the W.T. Grant Co. department store relocated several years ago, is to go on the open market soon, according to William Sleith, chairman of the Downtown Action Committee. Sleith said today the unidentified developer would rehabilitate the vacant building into smaller shops and offices. Sleith said there's little possibility the building could be rented as one store, and subdivision of the structure has better prospects. One subcommittee of the 29-member Community Development Advisory Committee—which is studying ways to spend federal block grants expected

ABOUT TOWN

Past Chiefs Club of Memorial Temple, Pythian Sisters, will have its annual Christmas party Friday at 8 p.m. at the home of Mrs. Ethel Lindquist of 111 Main St. Members are reminded to bring gifts for a grab bag.

WEEKEND SPECIAL!
MIXED BUNCH POMPONS bunch \$1.39

Paul Buettner FLORIST INC.
1122 Burnside Avenue, East Hartford, Connecticut
Phone: 528-9588

building completely for housing. Lawrence said much of the downtown revitalization concept hinges on bringing people to the district 24 hours a day, and only housing would do that. The Jaffe & Podrove Building's market price is likely to be in the \$100,000 range. Cost of renovation is estimated at about \$25,000. In other business this morning, the Mayor's Downtown Action Committee discussed the possibility of extending the Central Business District zoning designation further on the west side of Main St. to allow high-rise housing in that area.

LOSE UGLY FAT
Start losing weight today OR MONEY BACK. MONADEX is a tiny tablet that will help curb your desire for excess food. Eat less—weigh less. Contains no dangerous drugs and will not make you nervous. No exercise necessary. Change your life today. MONADEX costs \$3.00 for a 30 day supply and \$6.00 for twice the amount. Loss ugly fat or your money will be refunded with no questions asked. BY LOGGETT RECALL PARKADE DRUG 1044 Main St., West

HARRISON'S STATIONERS
— SINCE 1945 —
• CHRISTMAS CARDS FOR ALL — INCLUDING FOREIGN LANGUAGE —
• GIFT WRAPS — GIFT TRIMS
• TELEPHONE INDEXES — GAMES
• SCRAP BOOKS — TRIP BOOKS
WE HAVE IT ALL!
HARRISON'S STATIONERS
549 MAIN ST. (E. 11th St.)
OPEN DAILY 9:30 A.M. - 6 P.M.

Six Lafayette "under the tree" gifts for under \$40.

Give someone a Lafayette "under the tree" gift this Christmas and you'll get a million thanks. All for a present that can cost as little as \$6.95. Some of these special holiday items are designed for children... some for adults. But all are designed for smart Christmas shoppers who want to give gifts that will really be appreciated. There are only six presents featured in this ad. But there are thousands of them in each and every Lafayette store. You'll find everything from antennas to zoom movie cameras at Lafayette, your complete Electronics Shopping Center. When you visit us, ask a salesman about our 30-day No-Hassle money-back guarantee, our 60-day exchange privilege, and our handy gift certificates. But hurry, because these sale prices are only good until December 15th.

Save \$5.00 on our Lafayette 150-in-1 IC Electronic Experimenter's Kit
Reg. \$39.95 \$34.95
A large, fully-visual, working IC opens the door to 150 fascinating space-age projects. Build useful household and broadcasting devices; physics, chemistry and sound projects. Simplified, step-by-step instructions guarantee foolproof results. Solderless tension terminals permit reuse of parts. Built-in IC recorder player amplifier, battery powered solar radio, electronic fish lure, lie detector type circuit, plus many more. Great fun, educational, too! (99-35107*)

Also Available: Lafayette 80-in-1 Kit
Our low price \$27.95
Reg. \$34.95
A Walkie-Talkie... a Morse Code Practice Transmitter... a Morse Code Practice Oscillator. A great 3-in-1 package. Transmits voice and code messages; makes it easier to learn Morse Code (hear your dah-dah-dits while building speed). Crystal controlled transmitter, extra sensitive receiver. A great gift for the youngster, a great buy for you. (99-328151*) Battery not included.

Save \$2.00 on our Lafayette HA-100 Walkie-Talkie
Reg. \$8.95 \$6.95
9V battery for HA-100 (99-60212)* 39¢ each

Save \$7.00 on our Lafayette Unisonic 890 Calculator
Reg. \$34.95 \$27.88
Holiday savings to help calculate tax-time savings, too! A mighty mite calculator with bright digital display. Constant allows instant multiplication/division of any series of numbers by the same number. A key for instant calculation of mark-ups or discounts, floating decimal carries decimal automatically to proper place. Gain year-round savings at this great sale price. (15-115261*) AC adapter (15-11534L)* \$4.95

Save \$5.00 on our Lafayette Full-Feature AM/FM Digital Clock Radio
Reg. \$34.95 \$29.95
A fine AM-FM radio, and practical, too! Sleek, low-profile clock has big, easy-to-read numbers that put her on time to start a happy day. She'll awaken to music or buzzer alarm, press the 10-minute "drowse" button for an extra 40 winks. Convenient sleep switch shuts radio off after pre-selected period. Smart walnut-grain cabinet decorator-styled with white and black front. (17-02687W*)

Lafayette LSC-15 3-Speed Stereo Phono System
Our low price \$29.95
Here's a package of musical meritment for the younger jet set! Matched wide-range speakers deliver full stereo sound, rugged solid-state amplifier/control unit assures trouble-free performance. Built-in BSR manual record player with diamond needle, high-impact polycarbonate cabinet. All at a price too good to miss! (24-03681HW*)

Lafayette RADIO ELECTRONICS
The Electronics Shopping Center
All Stores Open Late Monday Through Saturday, CHRISTMAS STORE HOURS (Nov. 29 thru Dec. 23)

- MANCHESTER: Spree Shopping Center, 391 Broad St., Off Center St.
- WEST HARTFORD: Bishop's Corner Shopping Center, 357 N. Main St., Cor. Albany Ave. (Adj. Lord & Taylor)
- ENFIELD: State Line Plaza (Just east of Enfield Sq.), BRIDGEPORT
- MILFORD: Conn. Post Shopping Center, STAMFORD
- Lafayette Shopping Plaza, HARTFORD
- HAMDEN: Hamden Plaza

GROSSMAN'S

Fix-Up for the Holidays & Save!

8-piece white bath ensemble
Bathroom set includes:
• 5" acrylic "Comfortub"
• 24" "Janette" white Formica vanity
• 19" round vanity sink
• 2-handle chrome sink faucet
• Siphon jet toilet
• Wood toilet seat
• 3-value diverter #308C
• Trip waste drain 1.153-20
SAVE 36%
239.99 complete
regular 276.72
BORO WARNER
Compare at 5.49

EVANS
real wood paneling specials!
Great paneling Value!
"Chatham Pecan" or "Island Brige" real plywood panels with simulated woodgrains & anti-mar finish. 4x 7x 5/32".
compare at 5.49
279 panel SAVE

READY TO FINISH FURNITURE CLEARANCE
4-drawer pine chest
Looks great in bedroom, den, family room! Assembled and ready to use. 15"x27"x34"
24.99 each, reg. 35.99
10-drawer double chest
Colonial style in Pendleton pine, assembled & ready to use. 15"x27"x34"
49.99 each, reg. 69.99
deluxe latex wall paint
Durable & washable. Covers in one coat... lasts 3 years. 17 colors & selling white.
regular \$3.99 YOUR CHOICE \$6.49
semi-gloss latex enamel
Quaranteed 5 years. Dries in minutes to a satin look. Perfect for all interior walls & woodwork. 17 colors.
regular \$3.99

GROSSMAN'S
FREE USE AUTO HAUL TRAILER OR CARTOP RACKS
PINE & CENTER STREETS MANCHESTER
CALL 643-0136 or 643-4002
MON. TO FRI., 8 A.M. - 6 P.M.
SAT. 8 A.M. - 5:30 P.M.

MHS Yule Concert Planned for Friday

The annual Manchester High School Christmas concert will be Friday at 7:30 p.m. at Bailey Auditorium. Favorite Christmas selections will be performed by the combined choirs, advanced choir, and the Round Table Singers. Soloists performing will be Kathy Roberts, Eric Mann, Gloria Tripp, Gary Zito, Linnea Benson, Laura Haines, Shirley Giraitis, Linda Brody and Brian Beggs. Accompanists during the program will be Marcia Siano, Karen McArdle, Marina Moyer, Marcia Palizza, Gloria Tripp and Susan Hartzo. Musical director will be Miss Martha White who direct the musical groups. The public is invited. There is no admission charge.

INVENTORY CLOSE OUT
B.F. Goodrich
Trail Maker SNOWS

Qty	Size	Black	Price	Tax
1	E-78-14	Black	\$22.19	2.22
3	F-78-14	Black	\$23.17	2.37
4	G-78-14	Black	\$25.74	2.58
6	H-78-14	Black	\$26.14	2.60
6	G-78-15	Black	\$26.39	2.60
4	H-78-15	Black	\$28.84	2.80
4	H-78-14	White	\$30.63	2.76
2	G-78-15	White	\$28.96	2.80
4	H-78-15	White	\$31.40	2.80
2	L-78-15	White	\$35.57	3.13

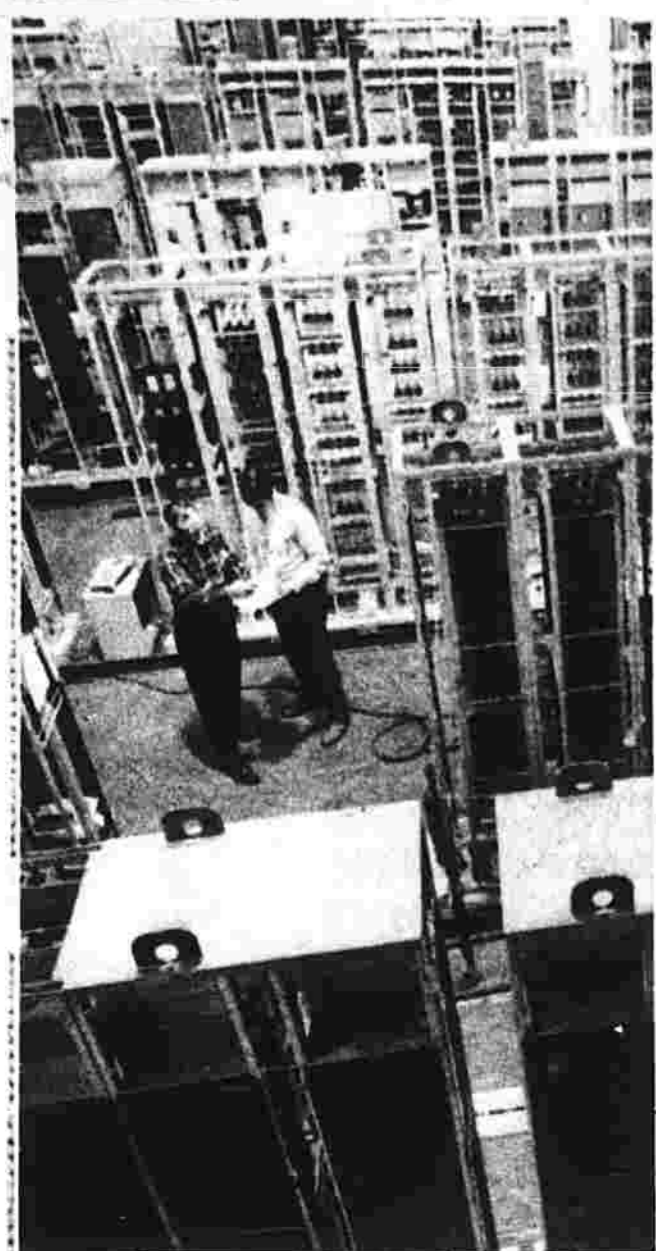
Regular Tread CLOSEOUTS

2	A-78-13	Black	\$22.30	1.80
2	B-78-13	Black	\$23.10	1.88
4	695x14	Black	\$23.40	1.85
4	B-78-13	White	\$25.50	1.88
2	695x14	White	\$26.00	1.85

OTHER SPECIALS NOT LISTED
Stop and check your size
TIRE OUTLET
RT. 83 Vernon 872-2228
Mon. - Fri. 7am to 9pm Sat. 8am to 6pm

LUCKY FRIDAY 13th
SAVE MONEY TOMORROW!
Place your Want ad tomorrow and save!
6 days for the price of 3 days
Call tomorrow only, December 13, 8 A.M. TO 5 P.M.
Non-Commercial Advertisers Only!
PHONE 643-2711
FOR ASSISTANCE IN PLACING YOUR AD
The Herald CLASSIFIED ADVERTISING

BUSINESS



Sidewalk Superintendents

Like sidewalk superintendents on a busy street, engineers at Westinghouse Electric Corp. at Chicago confer amid rows of motor control centers. Real city skyscrapers use the units as brains to direct flow of power to electrical equipment. (UPI photo)

Know Your Chamber Member

Pearl Opened Store in 1941

By Greater Manchester Chamber of Commerce
One of Manchester's long established businesses is B.D. Pearl & Son, located at 610 Main St. Burton D. Pearl, owner, founded the business in 1941.
The company deals in major

and small appliances as well as stereo and television. It carries a complete line of Frigidaire and General Electric major appliances and small general electric appliances. Also found at B.D. Pearl & Son are Kitchen Aid dishwashers, mixers and hoods and McGraw-Edison dehumidifiers.

In addition to its complete salesroom, B.D. Pearl & Son has a staff of factory-trained servicemen to render quality service to its customers.
B.D. Pearl & Son has been a member of the Greater Manchester Chamber of Commerce since February 1974.

Firm Recalls Broiler Unit

CHICAGO (UPI) — McGraw-Edison Co. has recalled about 17,000 broiler-roaster units because of the possibility of a shock hazard.
The units, sold under three brand names, were made between July 1, 1973, and Jan. 31, 1974, the company said.

McGraw-Edison said it was recalling the units voluntarily after notifying the Consumer Product Safety Commission.

The units, McGraw-Edison said, sold for between \$55 and \$75. Only units with certain numerical date codes stamped on the bottom are involved in the recall. It gave this description of the units involved:
Pentecost models 3599 and 4000 and catalog number 354-1648 (date codes 307 through 401, July 1, 1973-Jan. 31, 1974), sold by J. C. Penney, Inc.; Sears Models 393, 616, 610 and 303, 696,001 (date codes 0773 through 0174, July 1, 1973-Jan. 31, 1974) sold by Sears Roebuck and Co.; Toastmaster Model 5245 (date codes 0673 through 24014, July 1, 1973-Jan. 31, 1974), sold by other retail stores across the country.

GTE Subsidiary Gets Contracts In Philippines

STAMFORD (UPI) — A subsidiary of General Telephone and Electronics Corp. has received contracts for \$13.5 million to provide and install communications equipment in the Philippines.
The contracts went to GTE International Inc., it was announced this week.
The equipment will be used by the Republic Telephone Co., which currently operates 24,000 telephones in an area surrounding the capital city of Manila. The company will increase its equipment to 42,000 telephones.

Bank Promotes Columbia Man

Evan N. Fricker of Columbia has been named vice president and auditor of Hartford National Bank and Trust Co. and auditor of the bank's parent firm, Hartford National Corp.
Before joining Hartford National, Fricker was treasurer of Bauer Bros., a subsidiary of Combustion Engineering Inc. of Windsor.
Fricker became a certified public accountant while working for Price Waterhouse in Hartford, where he participated in the audits of several commercial banks and trust companies. He is a graduate of the University of Redlands, Calif.

Aetna Promotion

Bedelia D. Adamson of 341 Oakland St., Manchester, has been promoted to senior underwriter in the group new business review department at Aetna Life & Casualty, Hartford.
Ms. Adamson, a graduate of Auburn University, joined the company in 1972 as a junior underwriter.

Laser Beams

The laser beam as a practical communications medium of the future will be discussed by Howard J. Travers, communications manager of the Southern New England Telephone Co., at a meeting of the Manchester Lions Club Dec. 17.
The club will meet at 7 p.m. at the Steak 'n Restaurant in Talcottville.
Travers will discuss the growing need to meet national and overseas communications requirements. He is expected to talk about plans for more communications satellites and high-capacity undersea cables.



Mrs. Mary LeDuc

Mrs. LeDuc Heads Hospital Committee

Mrs. Mary LeDuc of 551A Hilliard St., Manchester, has been named chairman of the supervisory development committee at Hartford Hospital.

Mrs. LeDuc has served as a town director, is secretary of the Democratic Town Committee and a trustee of the Manchester Public Library system. Last June she was elected state central committee woman in the Third Senatorial District.

She has previously served as secretary-treasurer of the supervisory development committee. Her term on the committee expires in 1977.
For 23 years Mrs. LeDuc has been an active member of the Ladies Auxiliary, Veterans of Foreign Wars. She is also a member of the American Legion Auxiliary and now serves as senior vice president

PARK HILL-JOYCE FLOWER SHOP
WEEKEND SPECIAL!
Pompons
\$1.89 bunch
(Cash and Carry)
FLOWERS AND ARRANGEMENTS FOR EVERY OCCASION...
36 OAK ST., MANCHESTER Tel. 649-0791 or 649-1443
FREE Delivery & Parking • Frank Gakeler, Prop.

W. G. GLENNEY CO.
American Hardware Stores
A COLLECTION OF CHRISTMAS THINGS

SAVE 50% OFF THE PRICE OF ANY CHRISTMAS DECORATIONS IN STOCK ALL SALES FINAL LIMITED SUPPLY SAVE 50% OFF TAG PRICE ALL SALES FINAL

- 7-FT. SCOTCH PINE TREES \$19.77
- 7-FOOT QUAK-A-TREES \$44.99
- 7-FT. FIR BALSAM TREES \$34.77
- DELUXE ALL-STEEL TREE HOLDERS \$5.97
- FULL 3-PLY TINSEL GARLANDS \$1.47
- SHINY SATIN BALLS \$1.97 BOX OF 16
- 2 1/2-INCH GLASS ORNAMENTS \$1.44 BOX OF 12
- 9-FT. HOLLY & BERRY GARLANDS \$2.44
- 30-LIGHT ASSTD. MIDGET SETS \$1.44 REG. \$1.99
- 18" POINSETTIA & HOLLY WREATHS \$2.44

THE W.G. GLENNEY CO. 336 N. MAIN ST., MANCHESTER Mon-Thurs., 8-6:30; Fri. 8-6:30; Sat. 8-4

BUSINESS



Gerard DuBois

DuBois Takes Bancorp Post

L. Gerard DuBois of Manchester has been appointed municipal finance representative at First Connecticut Bancorp, Inc., Hartford.
DuBois will be responsible for marketing the corporation's new data processing budgetary accounting program and revised payroll services to municipal governments and boards of education.
Before joining First Connecticut Bancorp, DuBois was engaged in private consulting work and also served as special adviser to the finance department of the City of New Britain.

PUBLIC RECORDS

Warranty Deeds

Daniel C. and Virginia D. Guochino to Rose E. Heavens, property at 5 Avon St., \$28,500.
Richard T. Morris to Lester H. and Esther S. Wolcott, one-half interest in property at 54-56 Cambridge St., \$21,500.
Richard T. Morris to Thomas Gail Wilkinson, one-half interest in property at 54-56 Cambridge St., \$21,500.
Robert M. and Sandra L. Wilson to Erwin A. Hyson Jr. and Cynthia A. Hyson, property at 17 Margaret Rd., \$27,500.
Scott B. and Terry B. Cleandaniel to Robert M. and Sandra L. Wilson, property at 37 Kensington St., \$33,000.

Judgment Lien

Manchester Memorial Hospital versus Philip R. and Sandra Custer, property at 38 Union St., \$297.20.

Marriage Licenses

Michael Allan Orfitelli, 2 Village St., and Kathleen Ann Morris, 117B Sycamore Lane, Dec. 20, South United Methodist Church.

John Joseph Burke

128 Autumn St. and Sandra Jane Ferguson Hagenow, 23 Newman St., Dec. 28, St. James Church.

Building Permits

Harold Parent for Aldo Pavan, alterations at 99 Charter Oak St., \$1,950.
Pratt Signs for Savings Bank of Manchester, sign at 12 Purnell Pl., \$300.
Pratt Signs for Red Carpet Realtors, sign at 1129 Tolland Tpk., \$550.
Santos Construction for Louis Pardo, alterations at 62 North St., \$220.
Gerald LeBlanc for Alfred Chellman, alterations at 32 Vernon St., \$500.
U&R Housing Corp. for William F. Keish, repair fire damage at 307 Gardner St., \$3,000.
William Ferraroli, alterations at 45 Village St., \$4,000.
J.J. Kerian, tool shed at 14 Ensign St., \$170.
Bill Tunaly for Joseph Schuster, alterations at 22 Cumberland St., \$2,750.
Leonard Sign Co. for Provident Mortgage Co., two signs at 29 McNail St., \$2,500.

HANGING ON

NEW YORK (UPI) — The nation's security analysts still are keeping professionally active through membership in industry organizations even though the number employed has declined, according to an industry publication.
The publication, "Guide to Security Analyst Groups," published by David Gottlieb Associates, shows a total regional society membership in the United States and Canada of 14,139, up from 13,875 last year.

Firms Compete for Sources, Not Markets

NEW YORK (UPI) — Dwindling supplies and skyrocketing costs of raw materials are creating a curious economic reversal in the world. They also are stimulating interest in the economies and technology of mining.
Chairman Gabriel Hauge of Manufacturers Hanover Corp., the New York bank holding company, said competition for sources of materials is starting to replace competition for markets in the world.
"The frozen wealth of Siberia may be developed by resource hungry Japanese and American capital," Hauge said. "Importers of raw

materials are exporting processing plants and factories to sources of cheaper materials, cheaper energy and less rigorous ideas about environmental problems."
Emory Ayers, a management consultant in the mining field, said there is tremendous interest in reopening mines closed years ago because they were no longer profitable. Ayers was talking specifically about metal mines but the same thing is true in coal mining — even though the cost of opening a coal mine has increased dramatically.
Ayers' principal point was that,

with the exception of a few big companies, metal mining is economically a backward industry even though its scientific technology generally is good. He insisted there are shutdown metal mines all over North America that could be operated profitably if their owners had the economic information and sound management techniques to match the available mining technology.
"You cannot run a mine thousands of miles away successfully sitting behind a desk in New York," he said. "You have to visit the mine frequently and may have to take your family

to live there for considerable periods, cut off from all the usual comforts and pleasures of civilization."
As a result of remote control operation, mining companies tend to be resistant to new business ideas, he said, although not to new technology for extracting and processing ore.
A simple example of this is that the mini-computer which now does so many things in so many industries is hardly known in the mining world.
He said the mini-computer could be put to work easily at the mine site since its use doesn't involve expen-

sive and unreliable transmission of data over a long distance to a central computer. It would give the mine management people data on which to base truly intelligent business decisions.
The blunt fact, Ayers said, is that mining companies, especially smaller companies, usually don't have any information about their business to enable them to make intelligent business decisions.
"The executives don't even look on themselves as businessmen — only as mining men," Ayers said.

FINE MEN'S SHOES!
• WRIGHT • DEXTER
• MUNN-BUSH
GLENNEY'S MEN'S SHOP
700 Main St., Manchester
OPEN 11:30 P.M.
Read Herald Ads

spree!
THE WONDERLAND OF TOYS & GAMES PRICED LOW FOR MOM & DAD!

- FISHER PRICE PLAY FAMILY CASTLE Reg. 13.99 10.99
- MATTEL CATHY QUICK CURL® Our Reg. 11.88 8.88
- BARBIE'S SERVICE-FOR-3 TEA SET Reg. 2.69 1.88
- BARBIE'S STEWARDESS TEA SET Reg. 3.99 2.88
- KENNER SIT 'N SPIN® our reg. 9.99 8.88
- Esposito Brothers ACTION HOCKEY by Parker Bros. Reg. 12.88 8.88
- COLECO'S STANLEY CUP POWER PLAY HOCKEY Reg. 14.99 10.66
- MONOPOLY® BY PARKER BROS. Buy, swap and sell properties with this popular board game! Includes 28-48 players, ages 8 to adult, at least 72 per store. SAVE NOW! 3.33 our reg. 4.99
- HUFFY SCOUT RACER He'll ride in style on this deluxe 26" racer with bright yellow finish! Features 10-speed derailleur gearing system with stem mounted shift levers, dual caliper hand brakes with easy-reach levers, rat trap pedals and 26"x1 1/2" gumwall tires. Fully assembled, at least 24 per store. SAVE 10.99 \$79 our reg. 89.99
- HUFFY "RED HOT" BIKE Fantastic 20", 3-speed hi-riser bike for boys... sure to please! The "Red Hot" dragster features twist grip shifter, dual caliper hand brakes for safe stops, sparkling chrome plated rims, Red Pepper fenders and brightly yellow trim. Surprise him! Fully assembled. SAVE 13.99 \$66 our reg. 79.99

381 Broad St., Manchester SPECIAL HOLIDAY HOURS 10 A.M. to 11 P.M.

1
2
D
E
C
1
2



HERALD YESTERDAYS

25 Years Ago Mr. and Mrs. Wilfred Bulla are installed as commanders of DAV Chapter and DAV auxiliary, respectively. An estimated 1,200 attend Community Sing at Center Park.

10 Years Ago Henry (Hank) McCann is chosen as chairman and James E. Murray as secretary by Advisory Rec and Park Commission.

IT PAYS TO SHOP THE FINAST WAY

Fresh Chickens Whole 2 1/2 to 3 lbs 39¢ lb Cut-up or Split lb 45¢

Fresh Chicken Leg Quarters With Back 49¢ lb OF Breast Quarters With Wing 49¢ lb

U.S. No. 1 Washed Potatoes 10lb bag 59¢

Clip This Valuable Coupon!

Large Eggs Finest Fresh Grade A one doz 39¢

205 Spencer Street K-Mart Plaza (Silver Lane) MANCHESTER SUPERMARKETS

Selective Buying Adds Dividend to Gifts

By ROZ LISTON... Original prints, gold and silver coins, commemorative and wine are among the gifts that may bring investment opportunities to friends and family.

Many investors, stung by losses on Wall Street, have taken refuge in the gold and silver coin market, where valuable gifts await the collector.

Lee Fox, director of Perera Fifth Avenue Numismatic Division, says "people can play with coins, enjoy them, and still have something of real value."

The original print business is booming as the public becomes better educated about art and increasingly interested in buying reproductions.

Circle Gallery, Ltd., a nationwide dealer in original prints by well known artists, presents prints ranging from \$40 to \$20,000.

Franklin Mint, which manufactures coins and commemorative stamps, says the majority of its collectors are not motivated by the desire to invest.

"The notion of giving a commemorative plate or bicentennial issue to children or grandchildren is rough on their historical value is more important than the investment appreciation," says David Brown, director of communications.

CONN. SALVAGE CO., Inc. alias THE GLORIOUS EMPORIUM

Corner of Hartford Road & Pine St., Manchester - 649-7182

Hi Neighbor! Will the thieves who attempted to make off with our merchandise Sunday night please come in and see me.

Now for a few hints of what we'll be peddling this week:

- 1) A stock of reg. \$22.95 Proctor Toaster Ovens in gift-giving condition at \$12.99 each. All fully guaranteed.
2) A load of wrought (or overwrought) iron stands for TV or stereo sets, made to order for \$5.49 at \$1.68 ea.
3) Expected (but not here yet) — load (oops!) of disposable diapers in some of the sizes we haven't had in some time, like daytimes and toddler. Should be here for the weekend.
4) Complete Xmas stock — lights, ornaments, nativity, plastic Santas, sleighs, etc. at half what the fancy stores get you for.

Remember our Exchange Hours: Thurs. Eve (10 to 11) Fridays 10 to 9 and Saturdays 10 to 9 'til Xmas.

INDEX table with categories: NOTICES, FINANCIAL, EMPLOYMENT, EDUCATION, REAL ESTATE, MISCELLANEOUS, AUTOMOTIVE, RENTALS.

TOOL MAKERS - All-around machinists and bridgeport operators. Top wages, fringe benefits and overtime.

ELECTRONIC Technician - Must be skilled in trouble shooting, complex linear circuits. Small company. Musical ability useful.

MANAGEMENT TRAINEE - for one of New England's fastest growing food chains. Restaurant experience helpful.

Administrative Assistant - To president in management concern in Hartford area. The work involves administrative detail of client's requirements.

LOST - Black long-fur cat. Vicinity Lenox Street. Answers to "Socks". Reward. Call 649-1907.

LOST - Brown and black, white dog, 12 weeks old, answers to "Shep". Vicinity Bissell Street. 643-5270.

FOUND - White pet rabbit in Forest and Main Street area. Owner please call 649-3449 after 5.

LOST - Passbook No. 134986, Glensbury Bank and Trust. Manchester area. If found, call 649-7216 any time.

IMPOUNDED - Black male Cocker-Poo. Contact Coventry Dog Warden, 423-8224.

IMPOUNDED - Small Beagle cross, tri-color, female puppy. Coventry Dog Warden, 423-8224.

LOST - Yellow female cat, vicinity of Northfield Green Condominiums. Call 646-7415.

PERSONALS - RIDE WANTED from Bissell Street vicinity to Pratt & Whitney, East Hartford.

ANNOUNCEMENTS - SANTA CLAUS for hire, Manchester area. Call 872-3302 for more information.

HAPPY ADS

BOB Please Come Home! Love, MOM

RUMMAGE SALE AND TAG SALE Talcoville Congregational Church 9:30-2:30 December 14

Happiness is saying "thank you" BURGER KING for making our Christmas Party

Happiness is... Listening to the Holy Spirit of Christmas Tidings at the MHS CHRISTMAS CONCERT

Thank You TROUPE 638 and 665 for helping to make the Girl Scout Leaders Christmas Party a success.

HAPPY HANUKKAH to My Neighbors Love, Lil Harvey

HELP WANTED - PART-TIME custodian wanted, two days per week, Monday and Thursday from 8:30 a.m. - 2 p.m.

LEGAL NOTICE - TO BE SOLD BY PUBLIC AUCTION ON THE PREMISES BY DECREE OF THE SUPERIOR COURT FOR TOLLAND COUNTY

WANTED - BRICK MASONS ABLE TO LAY BRICK. NON-UNION. CALL ENFIELD, 749-2741

WANTED - Assistant correspondent to help in the coverage of Coventry news. Phone Monica Shea 742-9495 after 12 noon.

HOUSEWIVES! DO YOU WANT TO EARN EXTRA MONEY? We have an immediate opening for women who want to work only part time.

HOUSEWIVES! DO YOU WANT TO EARN EXTRA MONEY? We have an immediate opening for women who want to work only part time.

HOUSEWIVES! DO YOU WANT TO EARN EXTRA MONEY? We have an immediate opening for women who want to work only part time.

HOUSEWIVES! DO YOU WANT TO EARN EXTRA MONEY? We have an immediate opening for women who want to work only part time.

It's your lucky day, Friday! Place a classified ad Friday and save money! 6 days for the price of 3 days! Call Friday for this special offer, between 8:00 a.m. and 5:00 p.m. Non-commercial Advertisers Only! PHONE 643-2711 FOR ASSISTANCE IN PLACING YOUR AD

The Herald CLASSIFIED ADVERTISING PHONE 643-2711 FOR ASSISTANCE IN PLACING YOUR AD

ADVERTISING RATES 1 day... 9¢ word per day 3 days... 24¢ word per day 7 days... 48¢ word per day 15 WORD MINIMUM Happy Ads... \$2.00 imp

ADVERTISING DEADLINE 12:00 noon the day before publication. Deadline for Saturday and Monday is 12:00 Noon Friday.

EXCELLENT BUY! RIGHT HERE IN TOWN! Immaculate 6-room Cape that offers 4 finished rooms, down and 2 large rooms, up with a full shed dormer, 1 1/2 baths, fireplace, carpeting, large paneled rear room, aluminum siding, detached garage and even a prime garage space.

OFFICE manager - Position of bookkeeping and basic accounting in Manchester requires bookkeeping and basic accounting skills as well as typing. Experience preferred. Call Ms. O'Neil at 649-6129.

AVON - Yes, you can give yourself a winter vacation! Earn that money selling beautiful Avon Christmas gifts, jewelry and cosmetics now. Go someplace exotic later. Do your selling experience necessary. Interested? Call 523-9401.

LEAD SINGER - Wanted for hard rock band, male or female. Call after 6, 647-1824, 646-9657.

PART-TIME janitorial work in automobile dealership. Fringe benefits. See Mike Hardell at Fitzgerald Ford, 100 Windsor Avenue, Rockville, 643-2465.

WOMAN WANTED - to work for expanding automotive distributor at new Manchester Branch. Good salary and benefits. Call Mr. Walkner, 247-6038.

LEGAL NOTICE - Manchester law firm has position available. Applicant must have a minimum CLA certification with one year experience in a hospital laboratory. Will be expected to occasionally rotate weekends as scheduled. These are full time, permanent positions with excellent salary and above average fringe benefits.

WILL BABY/SIT in my home. Bolton area. Call 646-2976 any time.

REAL ESTATE - HOLLAND - A warm home trimmed in sunshine. Six-room Country Cape, acre lot. Low 30's. 873-6232.

MANCHESTER - McKinley Street. Lovely custom six-room Split, 11 years old, 1 1/2 baths, 3 bedrooms, sliding glass doors from living room to patio, garage. Professionally landscaped. Priced below replacement value. Call 837-6600. Arrada Realty, 644-1539.

MANCHESTER - Seven room Cape on large lot with oversized 2-car garage, screened in porch, excellent condition. 30' x 30' lot. Call 649-1180.

MANCHESTER - Six room Colonial. First-floor family room with fireplace, formal dining room, near school. Call 649-1180.

MANCHESTER - Six room custom built Ranch. Fireplace, carpeting, garage, west side location, near school, enclosed porch, excellent condition. 30' x 30' lot. Call 649-1180.

MANCHESTER - New 3-bedroom Ranch. Fireplace, screened porch, excellent condition. 30' x 30' lot. Call 649-1180.

VERNON - Six room Ranch with 2-car garage, large kitchen built in oven and range, three bedrooms, fireplace, living room, shed shrubbed lot. \$37,900. Wolverton Agency, Realtors, 649-2813.

PHILBRICK AGENCY REALTORS 646-4200

LUCKY FRIDAY 13th The Herald CLASSIFIED ADVERTISING

SPOTLESS REALTOR M.L.S. It is only one of the adjectives we use to describe this home. As soon as you enter the door you know this home has been "loved". Call us today so we can tell you more — you won't be disappointed.

REALE'S CORNER 175 MAIN STREET PHONE 646-4525

DELUXE CAPE under construction on Ashworth Street. Many quality features. Drive by and then call T. A. Crockett, Realtor, 643-1577.

SEVEN ROOM Raised Ranch, 2 1/2 baths, 2 fireplaces, laundry room, patio, 2-car garage, plastered walls, 2-car garage, utility room, built by Analdi. Immediate occupancy. Charles Lesperance, 649-7620.

OAK STREET - Large 6-6 bedroom, 3 bedrooms in each side, two oil hot water heating systems, electric water heater, three block walls from Main Street. Nice deep lot with trees. Good income. Truly a nice dining room, living room with fireplace, dining room with cathedral ceiling and fieldstone fireplace, screened porch, 2-car garage, \$38,000.

MANCHESTER - New Family Colonial, aluminum siding, three bedrooms, bath and lavatory, oversized modern kitchen, built-in, 24 combination dining and play room, garage, just right lot, conveniently located. Donald S. Gale Realty Co., Realtors, M.L.S., 289-7339.

MANCHESTER - Price Just listed! 6 year old 2 family, brick Ranch, 4 fireplaces, built-in, 3 bedrooms in each partial rec rooms with fireplaces, custom kitchen and carpeting. Far below replacement value. Call 425-2522. Ann Hunter, 649-5306.



BENJ
Painting-Papering 32
J. P. LEWIS & SON - Custom decorating. Interior painting. Paper hanging. New ceilings. Remodeling. Exterior painting. Gutters and leaders. Carpentry. Fully insured. For estimates call 649-9558.

CHRISTMAS TREES
at Hickory Ridge Farm
Scotch Pine White Spruce
Plantation is located on South River Rd. off Route 120. Contact: Robert Viny and Family 743-4354.

CHRISTMAS TREES - Tag and cut your own. White Spruce, Blue Spruce, Stanley Tree Farm, Long Hill Road, off Route 6, 872-9187, 872-9438.

ROOFING - Specializing in repairing roofs, new roofs, gutters, chimneys, cleaned and repaired. 30 years experience. Free estimates. Howley, 645-5381.

SEARS Kenmore sewing machine, \$80 or best offer. Call 649-9558.

FRIGIDAIRE Washer - Good condition, \$60. Call 649-9558.

CHRISTMAS TREES - Tag and cut your own. All trees \$6. Birch Mountain Road, Bolton. Weekdays after 3, weekends anytime. Phone 742-9046.

WOOD-Seasoned oak, sawed any length, split, 500 per cord delivered. John Hutchinson, 742-8029.

SEASONED hardwood, large 3/4 ton pickup load, \$30. Call 875-4350 or 742-6519.

CHRISTMAS TREES - Tag and cut your own. All trees \$6. Birch Mountain Road, Bolton. Weekdays after 3, weekends anytime. Phone 742-9046.

MANCHESTER - four rooms, adults, single or double. January, 1171, Security, utilities extra. After 5, 643-9274.

OLDER four room Duplex, Call 643-0725.

FOUR ROOM apartment, one or two children, no pet. Security required. \$135 per month. Call 644-9635.

EAST HARTFORD - Newly decorated three room apartment, gas heat, full basement. No pets. 649-7070.

MANCHESTER - Only one in south end, ideal for food business, real estate, etc. For details, 643-8078 after 6.

SINGLE ROOM and three rooms available as suite or singles. Air-conditioning, off street parking. Phone John H. Lappen, Inc. 649-5261.

MANCHESTER - Only one in south end, ideal for food business, real estate, etc. For details, 643-8078 after 6.

MANCHESTER - Gracious two-bedroom Townhouse, private entrance and patio. Full basement, air-conditioning, appliances, carpets and pool. \$255 per month. Paul W. Dougan, Realtor, 646-1021 or 643-4535.

MANCHESTER - Luxurious one-bedroom Townhouse, king size master bedroom, walk-in closet, full private basement. Includes all appliances, heat, carpeting and pool. \$230 per month. Paul W. Dougan, Realtor, 646-1021 or 643-4535.

AVAILABLE January 1st, three room apartment, modern styling, appliances, parking, storage, carpeting, no dogs. Hilliard Street, after 6 p.m. call 649-7289.

FOUR ROOM flat, in four family house, second floor, no pets or children, security, 643-8181.



WIN AT BRIDGE
Joe makes his own hand luck
The bidding has been 12

Table with columns: NORTH, SOUTH, WEST, EAST, and various card symbols and numbers.

Table with columns: ACROSS, DOWN, and various numbers and letters.

Table with columns: JAN, FEB, MAR, APR, MAY, JUN, JUL, AUG, SEPT, OCT, NOV, DEC, and various numbers and letters.

1
2
3
4
5
6
7
8
9
10
11
12

MANCHESTER HOSPITAL NOTES

Discharged Tuesday: Edward Cunningham, 23 Union St.; Eileen Tupper, 39 Hilltop Ave.; Vernon Cecil Dorsey, 23 Fairfield Dr.; Adrienne Michaud, 442 W. Middle Tpke.; Richard Weekes, 25 Discovery Rd.; Vernon Nina Anderson, 29 Cottage St.; Alice Brown, 28 Turnbull Rd.; Steve Roberts, East Hartford; Dorothy Copeland, 85 Derrin St. Also, Richard Crowley, East Hartford; Donna Bushey, 56 Channing Dr.; Marie King, 299 Oakland St.; Harvey Harris, East Hartford; David Newton, RR 3, Coventry; Joan Fazzino, 159 Birch St.; Thomas Young, Stafford Springs; Eugene O'Reilly, 91A Downey Dr.; Lyle Butler, Glastonbury; Scott Mazar, 160 Loomis St.

WORK FORCE PHILADELPHIA (UPI) — By 1980 about half the U.S. working force will be female and about one-seventh of the total work force will be black, says Dr. Seymour L. Wolfbein, dean of Temple University's Business Administration. Wolfbein also said that, contrary to opinion sometimes heard, all through the remaining 1970s the demand for workers with manual skills will be just as great as that for people with mental skills.

WORLD ALMANAC FACTS



The expression "to pull the wool over one's eyes" was originated during the period when gentlemen wore white wigs which were usually made of wool. When highwaymen committed a robbery they would pull their victim's wig down over his eyes before taking his valuables. The World Almanac notes.

SPECIAL on Packer Cut
10 Lb. Average
U.S. CHOICE
\$1.39 lb.

Frank Toros will cut your Sirloin Tip Oven Roast into Roasts, or Roasts and Sirloin Tip Steaks. (Weight about 10 lbs.)

Pork is another good freezer item
CORN FED WHOLE PORK LOINS \$1.09 lb.

Turkeys are lower with 10 to 12 lb. Birds at **54¢ lb.**

Lettuce is lower and we have the best iceberg in town **39¢ lb. head**

STATE OF MAINE U.S. NO. 1 **POTATOES** are a budget buy at Pinehurst's low price of **10¢/59¢**

We have a limited grinding of **SWEDISH KORV** for this week and are taking orders for Holiday Korv, Morrell Hams, U.S. Choice Rib Oven Roast of Beef and Fresh Turkeys.

CASINGS FOR KORV 1-LB. TUB
FRESH FLOUNDER
FRESH BLUEFISH
TINY BAY SCALLOPS
FRESH OYSTERS

Shop Pinehurst Tonight till 9, Friday from 8 A.M. till 9 P.M.
PINEHURST GROCERY
302 MAIN

*Federal law and regulations prohibit the payment of a time deposit prior to maturity unless three months' interest is forfeited, and interest on the amount withdrawn is reduced to the regular passbook rate.

Effective November 27th, The F.D.I.C. is raising its maximum insurance on savings accounts to \$40,000. So now you can save more at Hartford National and still have this guaranteed protection.

Hartford National announces new, higher interest rates.

<h2>6%</h2> <p>Choice 1-Year Account</p>	<h2>7 1/4%</h2> <p>Super-Seven 4-Year Account</p>
---	--

Stop by our nearest office today and start earning more interest on your money. Because we've just boosted our Choice 1-Year Account from 5 1/2% to a hefty 6% interest. So it now earns as much as our Choice 2-Year Account.

And our Super-Seven Account is raised from 7% to 7 1/4% (\$1,000 min.).*

We continue to pay the highest legal rates on all our savings and investment accounts, to encourage you to save. And help you fight inflation.

We'll even help you save with regular transfers from checking to savings, if you like. Just ask.

5%	Regular Accounts yield	5.095%**
5 1/2%	90-Day Preferred Accounts yield	5.614%**
6%	Choice 1 & 2-Year Accounts yield	6.183%**
7 1/4%	Super-Seven 4-Year Accounts yield	7.519%**

Of course these new rates are available to our Favorite Person™ Account customers, plus a great deal more. You get totally free checking, Master Charge, your own Favorite Person Card, no-bounce checking, discounts on most personal loans, free traveler's checks, and much more.

When it comes to fighting inflation, Hartford National gives you more tools in one convenient account than any other bank around. There are no fees or service charges whatsoever. The only time you ever pay a cent is if you actually borrow money. Pick up an application today and bank the free way.™

HARTFORD NATIONAL
(The Favorite Person) BANK

Manchester Offices: 821 Middle Turnpike, East; 320 Middle Turnpike, West; 990 Main Street; 220 North Main Street
East Hartford Offices: 1035 Main Street; 784 Silver Lane

Manchester Evening Herald

Crude Oil Costs To Go Up Under New Price System

VIENNA (UPI)—The world's major oil exporting nations decided today to increase the price of crude oil by 7.4 per cent from Jan. 1, 1975. Iran's Interior Minister Jamshid Amouzegar said. The new price will be \$10.46 a barrel, Amouzegar said, compared with the present average selling price of crude of \$9.74 dollars a barrel.

New Pricing System
The new price will be under a unified pricing system, ending the posted price system which set prices at an artificially high level.

The new price for a 42-gallon barrel of oil was fixed by ministers of the 13-member Organization of Petroleum Exporting Countries meeting in Vienna.

"We agreed to abolish the posted price system—the root of excess profits by oil companies," Amouzegar said.

"We all agreed that a single unified price system must be adopted. The new system will be in the interest of the consumer. It will limit the profits of oil companies."

Produce 85 Per Cent
OPEC's members — Abu Dhabi, Algeria, Ecuador, Gabon, Indonesia, Iran, Iraq, Kuwait, Libya, Nigeria, Qatar, Saudi Arabia and Venezuela — produce 85 per cent of world oil exports.

The posted price is a theoretical price of crude oil from which actual prices are worked out by a complicated system of taxes and royalties paid by oil companies to the producers.

Present Price \$9.74
Present posted price is \$11.65 a barrel but the actual price is about \$9.74.

The OPEC ministers also agreed to hold a special strategy session on a proposed global oil summit in Algeria Jan. 8.

Venezuela's Mines Minister Valentin Hernandez-Acosta said the Algiers meeting will discuss the proposal by French President Valery Giscard d'Estaing for a three-way summit of oil producers, consumers and developing nations.



Seven Years Bad Luck?

Janet Linley expresses the dismay that is shared by many who are superstitious especially if they break a mirror on Friday, the 13th, which means, if you are really superstitious, more than just seven years of bad luck. On the optimistic side, maybe the mirror was old anyway and cost only 89 cents. (Herald photo by Pinto)

Fate of Coventry's New Town May Be Decided Next Tuesday

By MONICA SHEA
Peter Libassi, president of Greater Hartford Process-DevCo, said today that the Process Board of Directors will meet Tuesday to decide the fate of the new community in Coventry in the light of current economic conditions.

He said no decision has been made and none will be until the meeting at which an assessment of the economic factors will be presented to the board.

Rumors Persist
His statement came amid persistent reports that DevCo had changed its course of action, including one published report that the project for Coventry had been shelved.

Libassi said, "The Board of Directors is meeting next week on the economic viability of continuing the project. We are looking at problems such as housing starts in the area and the economic situation in the state."

"Most of the staff (of DevCo) is working on the economic data and assembling an analysis to present to the Board next week. The DevCo Planning Center in Coventry has been closed because we felt there was not much point in having the center open until we know which way we are going."

Objective Review
Libassi said, "We are making a very objective review of the project. It can not defy economics. This review has nothing to do with the concept of new community or if it is the right thing for Coventry. There is no question of the validity of the concept of a new community."

Libassi said the strength of the opposition in Coventry to the new community had nothing to do with bringing about the review of the project.

Libassi said, "We have had opposition for two years and if the new community is built we will have opposition for the full 15 years of building time. The opposition is something you can deal with. You can have coffee hours, and distribute brochures to get your point across. The local opposition is not a factor in making this decision."

Libassi said the board would have several options open to it next week. Libassi said, "One of the options is to withdraw the zoning application and the zoning would be to leave the zoning application on the table and just not go forward with the building. It is possible that we could withdraw the application and hold the land for future use. It is also possible that we will withdraw the application and dispose of the land."

There is an application before the Planning and Zoning Commission from DevCo which would add a section to the zoning regulations to allow for building a planned community. The commission is now trying to engage a consultant, Walter Blucher, to review the application.

Waste Paper Market Slumps

By SOL R. COHEN

"All of your good works for ecological recycling may be going for naught these days," is what it's saying.

Over-supply
Meeting Tuesday in Foxboro, Mass., the association members learned — to no one's surprise — waste paper products are in serious over-supply. As a consequence, paper stock dealers have been caught in an economic squeeze between inventories purchased at high prices and declining mill-buying prices.

Abe Ostrinsky of Manchester, who owns a waste material business on Parker St., is secretary-treasurer of Eastern Paper Mill Suppliers Association, the largest trade group of his kind in New England.

Ostrinsky said paper dealers and mills in the New England area have placed a freeze on purchasing used newspaper and cardboard and that the freeze will be in effect until Jan. 6. He said his yard is cooperating and won't accept any paper until then.

Prices Plummet
His association's statistics for the past few months show that mill prices paid to waste paper dealers for mixed paper dropped from \$40 to \$10 per ton, and newspaper from \$70 to only \$20, and corrugated from \$60 to a low of \$20.

The Paperstock Institute of America posts prices the 10th of each month for used paper sold to dealers.

For the first time in many years, the institute didn't post prices on Dec. 10.

"Nobody is quoting prices on used paper," said Ostrinsky. "The price is nominal, provided, of course, any dealer is even buying. It's virtually impossible to describe any price at all."

Travel Show Features Fly/Cruise Vacations

The audience attending last night's Travel Show, sponsored by The Herald and its participating travel agencies, received a rare treat when former American Airlines stewardesses modeled uniforms dating back to 1934.

In cooperation with American Airlines and the Cunard Cruise Lines, fly/cruise vacations were featured.

Julian Matte, sales representative for Cunard, told of the Queen Elizabeth 2 and her upcoming round-the-world trip.

"For such a trip," he said, "the QE2 takes aboard two and one-half tons of caviar and over two tons of filet mignon."

Following his presentation of slides showing life aboard the QE2, Matte shows slides of the "Adventure" which cruises Caribbean waters.

Robert Bader representing American Airlines discussed the convenience of flying to the Caribbean islands and then boarding a cruise ship to visit the other islands.

"Getting to the sun in a hurry," was the way he termed the fly/cruise vacations offered.

A film "It's A Pleasure To Be Here" was also presented by American Airlines.

Representatives of LaBonne Travel Agency and Goodchild-Bartlett Travel, both of Manchester, were on hand to answer questions and help expedite any travel plans.

Following the program, a draw for prizes donated by area merchants and participating travel agencies, was held.



Model Uniforms at Travel Show

INSIDE TODAY

Area Profile Pages 7, 8, 11, 15
High School World Page 20
Business news Pages 24, 26
Old Coder Page 9
Gardening with Atwood Page 23
MHS honor roll Page 2
ECHS honor roll Page 10

Why Knock on Wood?

By WEBER F. TROUT
United Press International

Today is another of those spooky days for the superstitious — Friday the 13th with all its awful potentials.

The scoffers say "Hah! Why knock on wood? What's wrong with black cats? The whole thing is silly."

The legends of superstition say the wood-knocking thing goes all the way back to the Druids in ancient England.

The Druids believed trees were inhabited by gods.

You might figure that knocking on a tree might be construed as rapping the gods, but that is not how it works.

Knocking on wood, tree wood, of course, is the same as asking those gods for protection against some misfortune the bad gods may be conjuring up for you.

You don't have to believe it, but why

Friday, the 13th; Ignore It, If You Can

SOL R. COHEN

To those who insist that today is sad—that it's one of those days when all things go bad.

Who tell you today's a day to fear—and call you quite mad if you tend to jeer.

"It's the 13th, a Friday," they tremulously say, and

"Be sure to be careful when you go out today."

"Don't walk under ladders, or light three on a match, or look at black kittens, or an umbrella snatch."

We say to those people, "Life's not all that bad — it's just what you make it, either happy or sad."

"There are those who are able — when things go wrong — to whistle a tune, to hum a song."

"You claim it's unlucky, because it's The Day. We claim you can't mean all the things that you say."

We decided this morning, when the day began, to forget all about it—that is, if we can.

Auto Industry Spokesmen Plead for Federal Action

By RICHARD HUGHES
UPI Business Writer

Auto industry executives from President Ford's home state of Michigan told the President Thursday the economy is in worse shape than he says, calling it a disaster verging on a depression.

Elsewhere, workers from a variety of industries, including textiles, autos, paper, aluminum, clothing, appliance and sporting goods, were laid off or given notices Thursday.

Recovery Predicted
And Budget Director Roy Ash told a Senate hearing the next six months will be so bad in terms of unemployment and sagging business the nation will want to see it pass into history "as soon as possible."

However, he said, the economy will recover in the second half of 1975.

At the White House, Leonard Woodcock, president of the United Auto Workers, a union with some 200,000 laid-off workers, said he challenged Ford's statement that the economy was in "difficult straits" but not in a crisis.

"I think it's a crisis situation. It's highly critical... feeding on itself and may go to worse conditions," Woodcock said. The recession, he said, could lead to a depression.

Disaster Area
Lee Iacocca, president of Ford Motor Co., told the President the auto industry is a "disaster area."

The top executives from Ford, General Motors, Chrysler, American Motors and the UAW, along with Michigan Gov. William G. Milliken, met for two hours with Ford, urging him to do some pumping to help the auto industry in its worst sales period in 15 years.

Milliken said the President gave a "clear indication" he would consider a tax cut to provide more dollars for buying cars. Press Secretary Ron Neesen said President Ford promised to "do something" but said nothing about a tax cut.

Ford Opposes Gas Tax
Ford also once again ruled out a big boost in gasoline taxes to conserve energy.

Both houses of Congress moved to create public service jobs and expand unemployment benefits for the hundreds of thousands persons thrown out of work by the recession.

The Senate passed a \$7 billion program and the House began debate on a similar bill and passed one that extends unemployment insurance from 39 to 52 weeks.

In other developments:

Leveling Off Soon
—The Labor Department said inflationary price increases may be leveling off. The department's wholesale price index rose only 1.2 per cent in November, half the gain of prior months. Most of the increase was caused by higher sugar prices.



SHOPPING DAYS TO CHRISTMAS